



Some vibrators require 3/2 valve (3 port, 2 way valve ) which can be manual or solenoid operated.

With this type of valve, when closed the air in the pipe between the valve and the vibrator is exhausted through the valve, thus the vibrator stops almost instantaneously.

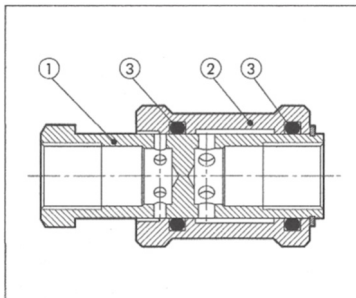
On some vibrators such as the BV single impacting and VTP25 single impacting this type of valve must be used. The air is only required for a short time, this will give one impact and the piston held in the impact position until the air supply is released.

If this type of valve is not used on piston vibrators, such as the FP, FPLF & VFP, then on shutting off the air supply the vibrators use the air in the delivery hose and slow down slowly, with the piston centralising and causing starting problems.

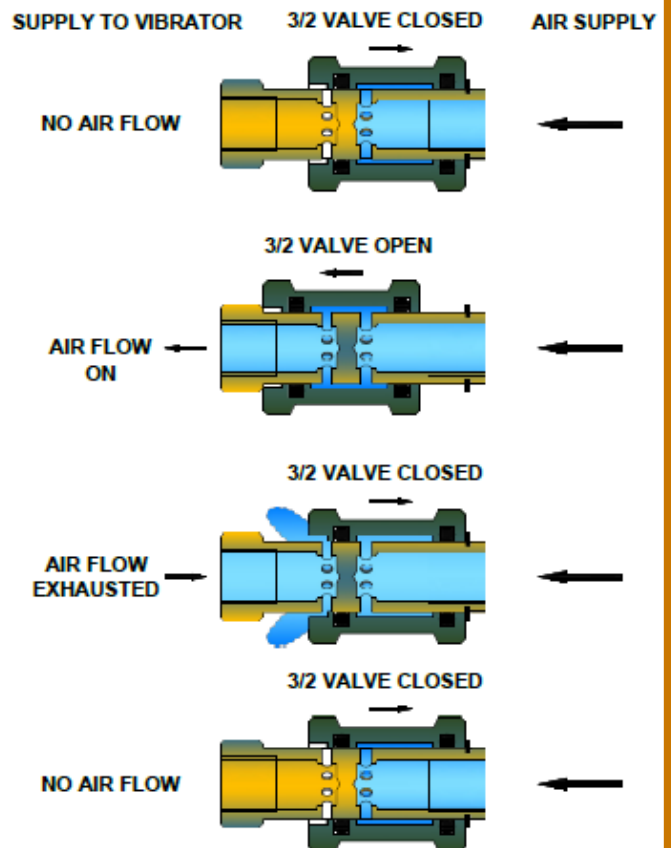
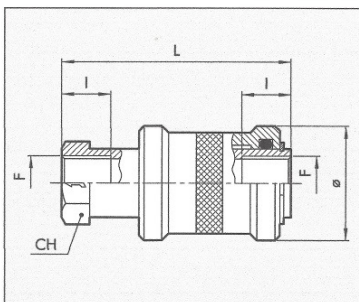
**Must be used on Vibrators: VTP25 Single Impact , BV Single Impact**

**Recommended for use on: FP, FPLF, VFP**

TECHNICAL PERFORMANCE				
	1/8"	1/4"	3/8"	1/2"
Part Number	046152	046153	046154	046155
Operating Pressure	0÷10bar (0÷1MPa)			
Operating temperature range	-10÷80°C			
Fluid	Lubricated or unlubricated filtered air			
Flow Rate at 6.3 bar ΔP 0.5 bar	430	680	1400	2200
Flow Rate at 6.3 bar ΔP 1.0 bar	630	1040	2070	3330
Conductance C	170	247	537	833
Critical ratio b	0.2	0.3	0.1	0.2



- 1 Body**
- 2 Ring nut**
- 3 Seals**



DIMENSIONS						
Part No	Drawing Number	F	Ø	I	L	CH
046152	071040	1/8"	25	10	48	11
046153	071041	1/4"	30	12	58	19
046154	071042	3/8"	35	12	68	22
046155	071042	1/2"	40	15	80	27

## VIBRATECHNIQUES LTD

20 Cecil Pashley Way, Shoreham Airport, Shoreham by Sea, West Sussex, BN43 5FF

Tel: +44 (0)1273 430977 Fax: +44 (0)1273 430978 Email: sales@vibtec.com Web: www.vibtec.com