

MVSI-E

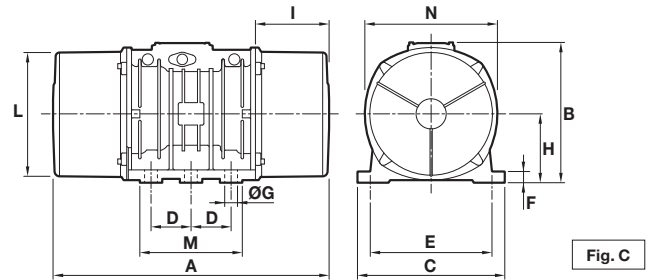
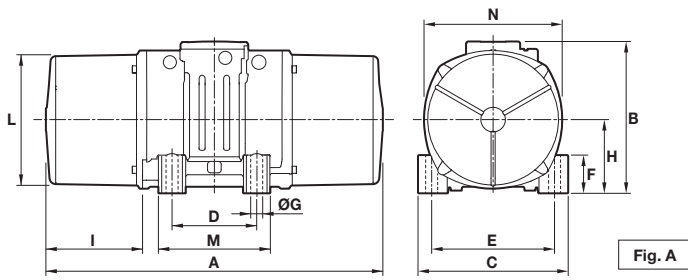


8 poles - 750/900 rpm

Three-phase

DESCRIPTION			MECHANICAL SPECIFICATIONS								ELECTRICAL SPECIFICATIONS									
Code	Type	SIZE	Static moment*		Centrifugal force				Weight		Temp. class (G)	Temp. class (D)	Max input power		Power rating		Max. current		tE (s)	Ia/In
			kgmm	kgmm	kg	kg	kN	kN	kg	kg			W	W	W	W	A	A		
			50Hz	60Hz	50Hz	60Hz	50Hz	60Hz	50Hz	60Hz			50Hz	60Hz	50Hz	60Hz	400V 50Hz	460V 60Hz		
6E2568	MVSI 075/150E-S02	20	163	163	104	149	1,02	1,46	18,1	18,1	T3	130°C	230	250	100	110	0,67	0,64	25	2,00
6E2575	MVSI 075/250E-S02	30	286	286	181	260	1,76	2,55	26,2	26,2	T3	130°C	350	350	190	205	0,86	0,80	25	2,47
6E2615	MVSI 075/400E-S02	35	457	457	288	415	2,83	4,07	32,6	32,6	T4	120°C	280	300	135	150	0,57	0,56	30	1,66
6E2609	MVSI 075/660E-S08	40	723	723	456	656	4,47	6,44	44,0	44,0	T3	120°C	500	525	275	302	1,14	1,10	30	2,15
6E2610	MVSI 075/910E-S08	50	1012	1012	637	917	6,25	9,00	55,8	55,8	T3 T4	120°C	600 450	670 500	336 225	380 255	1,33 1,14	1,30 1,10	30 25	2,14 2,50
6E2618	MVSI 075/1310E-S08	60	1464	1464	922	1327	9,04	13,00	80,0	80,0	T3	150°C	950	1100	646	740	2,09	2,10	30	2,63
6E2891	MVSI 075/2110E-S02	70	2326	2326	1463	2107	14,40	20,70	130	130	T3	135°C	1500	1650	1065	1225	3,61	3,60	15	4,18
6E2884	MVSI 075/3110E-S02	80	3421	3421	2152	3099	21,10	30,40	188	188	T3	135°C	2000	2200	1460	1600	5,13	5,00	13	3,96
6E2515	MVSI 075/3800E-S02	80	4206	4206	2645	3808	25,90	37,40	204	204	T3	135°C	2500	3000	1800	2100	5,70	6,00	14	4,00
6E2862	MVSI 075/4200E-S02	90	4658	4658	2930	4218	28,70	41,40	238	238	T3	135°C	2630	2990	1900	2180	6,18	6,20	14	3,84
6E2826	MVSI 075/5300E-S02	90	5838	5838	3672	5287	36,00	51,90	268	268	T3	135°C	3520	3800	2570	2775	7,79	7,40	14	3,80
6E2870	MVSI 075/10000E-S02	97	12390	10973	7792	9937	76,40	97,50	438	419	T3	135°C	5100	5800	4100	4500	11,40	11,00	17	3,50

* Working moment = 2 x static moment.



DIMENSIONAL SPECIFICATIONS (mm)

Type	Fig.	Holes														Cable entry thread
		A	B	C	D	E	ØG	N°	F	H	I	L	M	N		
MVSI 075/150E-S02	A	344	203	167	105	140	13	4	30	82,5	93	145	146	160	M25x1,5	
MVSI 075/250E-S02	A	394	211	205	120	170	17	4	45	93,5	106	170	174	182	M25x1,5	
MVSI 075/400E-S02	A	435	224	205	120	170	17	4	42	104,5	117,5	187	162	203	M25x1,5	
MVSI 075/660E-S08	A	500	244	230	140	190	17	4	45	116	134	207	190	225	M25x1,5	
MVSI 075/910E-S08	A	574	244	230	140	190	17	4	45	116	171	207	190	225	M25x1,5	
MVSI 075/1310E-S08	A	617	272	275	155	225	22	4	70	130	177	238	210	253	M25x1,5	
MVSI 075/2110E-S02	A	666	321	310	155	255	23,5	4	77	157	178	277	215	295	M25x1,5	
MVSI 075/3110E-S02	A	734	347	340	180	280	26	4	80	165	202	303	240	320	M32x1,5	
MVSI 075/3800E-S02	A	796	347	340	180	280	26	4	80	165	233	303	240	320	M32x1,5	
MVSI 075/4200E-S02	A	744	370	390	200	320	28	4	90	180	192	330	270	350	M32x1,5	
MVSI 075/5300E-S02	A	840	370	390	200	320	28	4	90	180	240	330	270	350	M32x1,5	
MVSI 075/10000E-S02	C	1002	437	460	125	380	39	6	35	215	300	387	320	414	M32x1,5	

tE (s) = set time tE from IEC/EN 60079-7. Ia/In = ratio between start-up current and maximum current. Several sizes are available with different mounting bolt patterns. Please contact sales office at Italvibras.

