

■ **MVSI**

Loose Capacitors

**Boxed Capacitors
c/w 2 mtr Cable**

**Boxed Capacitors
c/w 10 mtr & Plug**



			
Cables L0180	Formwork Clamp Leaflet L1404	ODE Control Unit Leaflet L0102	Direct on Line Starters Leaflet L0101

Technical Features

Power Supply

Single Phase 100-130Volt and 200-240Volth 50/60Hz.

Polarity

2 and 4 pole only

Conformity with Standards and Regulations

Low Voltage Directive 2006/95/EC
Atex Directive 2014/34/UE:EN/IEC60034-1
EN/IEC60079-0, EN/IEC 60079-31
UL1004-1.CSA C22.2 No 100, NEMA MG-1

Functioning

Continual service (S1) at maximum declared centrifugal force and electric power. Intermittent services are possible depending on the operating conditions. For detailed information, contact our technical assistance office.

Centrifugal Force

Up to 7.7kN maximum, with centrifugal force adjustable by varying eccentric weight positions refer to Technical Manual TM0015

Mechanical Protection

IP66 according to IEC/EN60529

Protection against mechanical impacts

IK 08 according to IEC/EN 62262

Insulation Class

Class F (155°C), class H (180°)on request.

Tropicalisation

Standard on all Vibrators with Vacuum encapsulation

Ambient Temperature

From -20°C to + 40°C. Versions for higher or lower temperatures are available on request.

Vibrator Thermal Protection

PTC thermistors are only available on request for single phase.

Fixing of the Vibrator

In all positions and therefore without restrictions.

Lubrication

All vibrators are lubricated in the factory and do not require further lubrication at Start-up.

Terminal Box

Large fixed electrical connections, see leaflet L0109. Special shaped terminal allow for fixing of the power supply cable, protecting it from coming loose.

Casing

In high tensile aluminium alloy

Bearing Flange

In cast iron (spheroidal or grey)). The geometry of the flange transmits the load to the casing uniformly.

Motor shaft

In treated steel alloy (Isothermic hardening) resistant to stress.

Eccentric weights

Allow continual adjustment of the centrifugal force. This force is realized by a graduated scale, which expresses the centrifugal force as a percentage of the maximum centrifugal force. See Technical manual TM0015.

A patented system, ARS prevents adjustment errors.

Supply Cables

Available on request, see leaflet L0180

Controls

Available on request
DOL Starters, Leaflet L0101
ODE Control Unit, Leaflet L0102

■ **MVSI**



The MVSI series represents the line of reference products for manufacturers of vibrating machines and plants operating in many industrial sectors and is made up of the largest range on the market, with centrifugal force values up to 30500 Kgf (300kN).

It is characterized by the continuous technological evolution in view of a continuous improvement in performance.

The MVSI series is designed to guarantee high performance in all conditions of use and environment, on page 14 the various surface treatments available are described.

Category: II2D

Level of protection:

Ex tD A21 T...°C IP66 (Ex tb IIIC T...°C Db)

Temperature class:

see tables

UE certificate:

LCIE 05 ATEX 6163 X

Zones of use:

21, 22

Painting / Surface coating

Electrostatic surface treatment based on epoxy polyester powder polymerised in oven at 200°C. Tested in salt spray for 500 hours. On request on MVSI series other surface coatings may be available, see page 14. Available also MVSS series with external components in stainless steel AISI 304, see page 40.

Other mounting bolt patterns are available. For further details please contact sales offices at Italvibras.

The technical data and models listed in this catalogue are not binding. Italvibras reserves the right to modify them without prior notice.

Certifications



Compliance with the applicable European Union directives.



Standard CAN/CSA – C22.2, N°.100-95, Certificate n° LR 100948
Class 4211 01 - Motors and generators
UL 1004-1 – Rotating Electrical Machines – General Requirements
Class II Div.2, Groups FG (T3B)



II2D (2014/34/UE)
Ex tD A21 T...°C IP66 (Ex tb IIIC T...°C Db)
EN 60079-0
EN 60079-31



Ex tD A21 T...°C IP66 (Ex tb IIIC T...°C Db)
IEC 60079-0
IEC 60079-31



Version MVSI-F available on request
Class II Div.1, Groups EFG
Standard CAN/CSA – C22.2, UL 1004-1



Version MVSI-C available on request
Class I Div.2, Groups ABCD
Standard CAN/CSA – C22.2

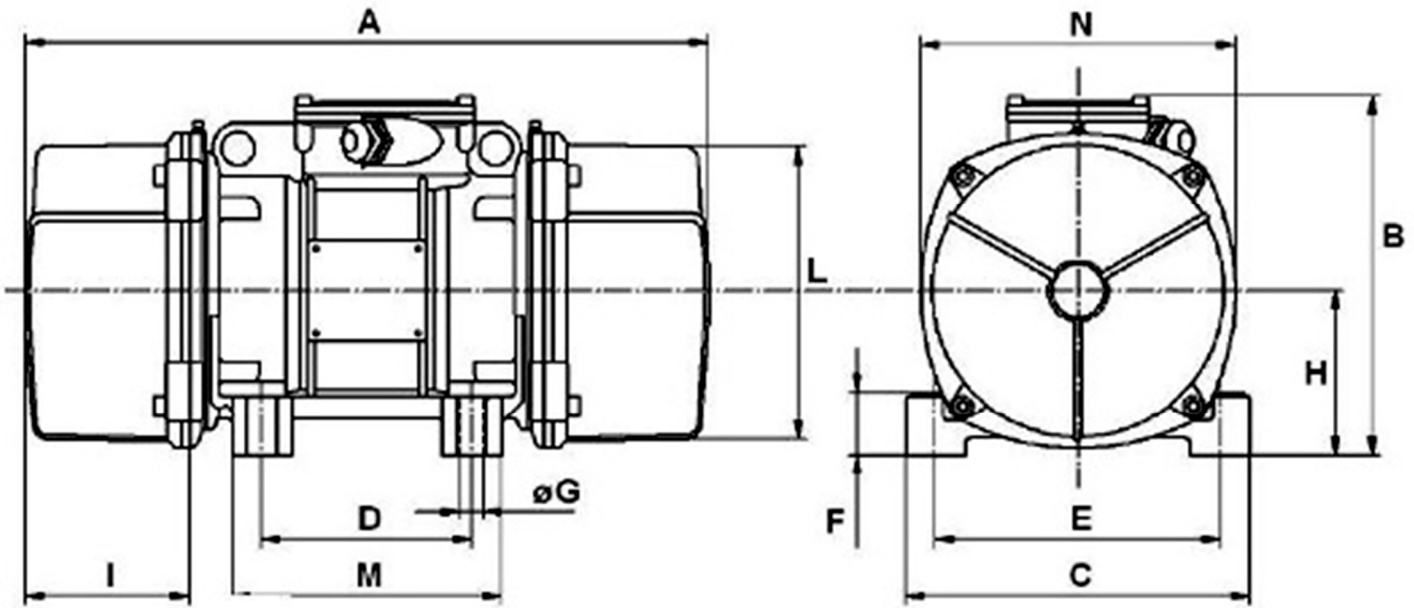


Certification for Eurasian Customs Union
N° TC N RU Д-IT.АЛ33.В.02527
N° TC RU C-IT.ГБ08.В.02190

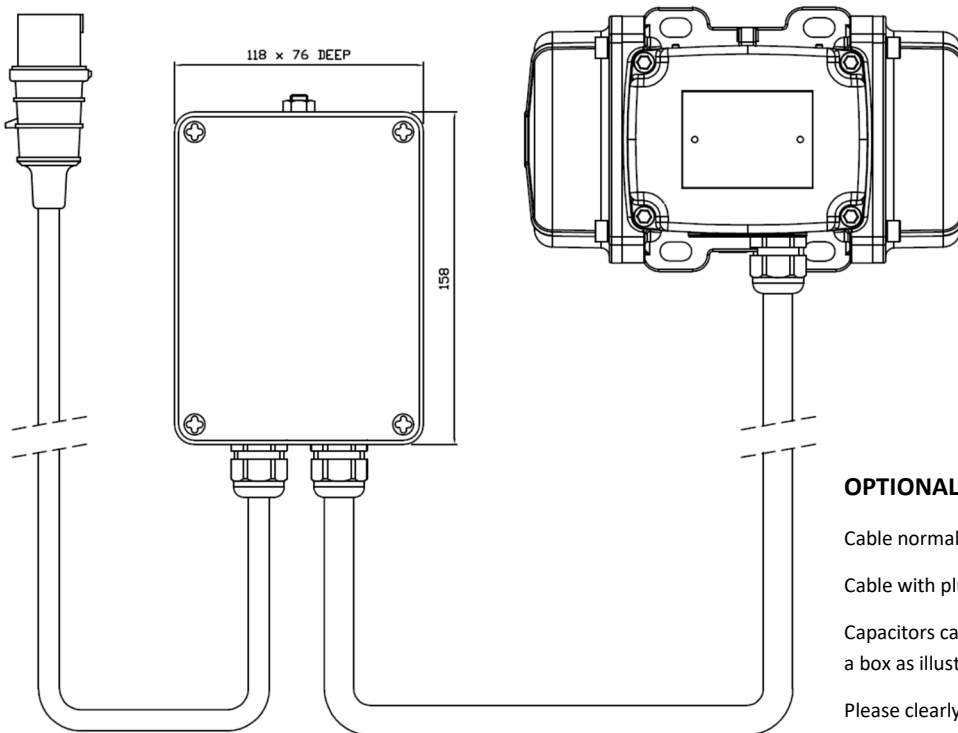


KOSHA Korea
Certificate n° 11-AVG BO-0359
Ex tD A21 IP66

DIMENSIONS



4 Hole Mounting Fig. A



OPTIONAL EXTRAS

- Cable normally 2 mtrs
- Cable with plug normally 10 mtrs
- Capacitors can be supplied loose or mounted in a box as illustrated.
- Please clearly state on order your requirements

Vibrator with Capacitor Box refer to **TM0183** for Wiring Diagrams

NB MVSI 15/550 & MVSI 15/700 115 Volt should be used with caution and wiring should be expertly engineered

Ia/In Ratio between start up current and maximum current

* Working Moment=2 x Static Moment

**Slot

◇ Dual µF Capacitor Start / Capacitor Run on 115v MVSI 15/550 & MVSI 15/700,; 240v MVSI3/700, MVSI 15/400, MVSI 15/550 & MVSI 15/700

Build S02 Features: on small Vibrators press fit flange, on large Vibrators bolted, some encapsulated

Build S08 Features: Ball Bearings, Aluminium Housing, Screw Fit Flange

Build S90 Features: Different design end cap bolted through bearing housing into body