



## MVSI-SI EXTERNAL ELECTRIC VIBRATOR

# ■ MVSI-SI



## Technical features

### STEEL IT polyurethane resin coating

Casing and terminal box cover have a special polyurethane resin coating with insertion of stainless steel leafing pigment AISI 316L.

Weight covers in stainless steel AISI 304.

All external hexagonal head screws are of stainless steel quality A2.

Coating is USDA approved for being used in the food sector where there is a high risk of accidental contact with processed food.

Salt spray tested for 500 hours.

Available for all models from all frame sizes.

## Technical features

### Power supply

Three-phase voltage from 24V to 690V, 50Hz or 60Hz or single-phase 100-130V, 60Hz and 200-240V, 50Hz (single-phase types are supplied without capacitor); suitable for use with an inverter from 20Hz to the base frequency with constant torque load profile.

### Polarity

2, 4, 6 and 8 standard poles, 10 and 12 poles on request.

### Conformity with Standards and Regulations

Low Voltage Directive 2006/95/EC; ATEX Directive 2014/34/UE; EN/IEC 60034-1, EN/IEC 60079-0, EN/IEC 60079-31, UL 1004-1, CSA C22.2 No.100, NEMA MG-1.

### Functioning

Continual service (S1) at maximum declared centrifugal force and electric power. Intermittent services are also possible depending on the type of vibrator and the operating conditions. For detailed information, contact our technical assistance office.

### Centrifugal force

Range extended up to 30500 kgf. (300 kN), with centrifugal force adjustable by varying eccentric weights position.

### Mechanical protection

IP 66 according to IEC/EN 60529.

### Protection against mechanical impacts

IK 08 according to IEC/EN 62262.

### Insulation class

Class F (155°C), class H (180°C) on request.

### Tropicalization

Standard on all vibrators, with vacuum encapsulation up to gr. AF 33 and 35, with "drop by drop" trickle system for larger sizes.

### Ambient temperature

From -20°C to +40°C. Versions for higher or lower temperatures are available on request.

### Vibrator thermal protection

Standard PTC rated thermistor heat detectors 130°C from size 70, on request for smaller sizes. On request, thermistors with different temperatures and anti-condensation heaters.

### Fixing of the vibrator

In all positions and therefore without restriction.

### Lubrication

All vibrators are lubricated in the factory and do not require further lubrication at start-up.

### Terminal box

Large terminal box to facilitate electrical connection. Special shaped terminals allow for the power supply cable to be secured, whilst protecting it from loosening.

### Electric motor

Three-phase asynchronous type. Designed for maximum starting torques and torque curves specific to requirements of vibrating machines. Insulated windings using vacuum encapsulating up to sizes AF33 and 35 included; using the "drop by drop" trickle system with class H resin for larger sizes. The rotor is die cast aluminium.

### Casing

In high-tensile aluminium alloy up to size 60, in spheroidal cast iron for larger sizes.

### Bearing flange

In cast iron (spheroidal or grey). The geometry of the flange transmits the load to the casing uniformly.

### Bearings

Custom made with particular geometry, especially designed for Italtibras, suitable to support both high radial and axial loads.

### Motor shaft

In treated steel alloy (Isothermic hardening) resistant to stress.

### Eccentric weights

Allow adjustment of the centrifugal force. This adjustment is realized by a graduated scale, which expresses the centrifugal force as a percentage of the maximum centrifugal force.

A patented system, called ARS, prevents adjustment errors.

# ■ MVSI-SI

The MVSI series represents the line of reference products for manufacturers of vibrating machines and plants operating in many industrial sectors and is made up of the largest range on the market, with centrifugal force values up to 30500 KgF (300kN).

It is characterized by the continuous technological evolution in view of a continuous improvement in performance.

The MVSI series is designed to guarantee high performance in all conditions of use and environment, on page 14 the various surface treatments available are described.

**Category:** II2D

**Level of protection:**

Ex tD A21 T...°C IP66 (Ex tb IIIC T...°C Db)

**Temperature class:**

see tables

**UE certificate:**

LCIE 05 ATEX 6163 X

**Zones of use:**

21, 22

## Weight covers

Standard in aluminium alloy, on request stainless steel weight cover in AISI 304 may be available. See also executions on page 14.

Split weight cover are available for many types, see MVSI-TS series.

## Painting / Surface coating

Electrostatic surface treatment based on epoxy polyester powder polymerised in oven at 200°C. Tested in salt spray for 500 hours.

On request on MVSI series other surface coatings may be available, see page 14.

Available also MVSS series with external components in stainless steel AISI 304, see page 40.

**Other mounting bolt patterns are available.**

**For further details please contact sales offices at Italtvibras.**

**The technical data and models listed in this catalogue are not binding. Italtvibras reserves the right to modify them without prior notice.**

## Certifications



Compliance with the applicable European Union directives.



Standard CAN/CSA – C22.2, N°.100-95, Certificate n° LR 100948  
Class 4211 01 - Motors and generators  
UL 1004-1 – Rotating Electrical Machines – General Requirements  
Class II Div.2, Groups FG (T3B)



II2D (2014/34/UE)  
Ex tD A21 T...°C IP66 (Ex tb IIIC T...°C Db)  
EN 60079-0  
EN 60079-31



Ex tD A21 T...°C IP66 (Ex tb IIIC T...°C Db)  
IEC 60079-0  
IEC 60079-31



Version MVSI-F available on request  
Class II Div.1, Groups EFG  
Standard CAN/CSA – C22.2, UL 1004-1



Version MVSI-C available on request  
Class I Div.2, Groups ABCD  
Standard CAN/CSA – C22.2



Certification for Eurasian Customs Union  
N° TC N RU Д-IT.АЛ33.В.02527  
N° TC RU C-IT.ГБ08.В.02190



KOSHA Korea  
Certificate n° 11-AVG BO-0359  
Ex td A21 IP66



## ■ MVSI



### Technical features

#### Standard painting

Electrostatic surface treatment for all external components based on polymerised epoxy polyester powder in oven at 200°C.

Good resistance versus corrosion in normal operating conditions.

Salt spray tested for 500 hours.

## ■ MVSI-S



### Technical features

Standard painting with weight covers in stainless steel.

Casing and terminal box cover with electrostatic surface treatment based on polymerised epoxy polyester powder in oven at 200°C.

Weight covers in stainless steel AISI 304.

Excellent resistance versus corrosion in normal operating conditions.

Salt spray tested for 500 hours.

## ■ MVSİ-SI



### Technical features

#### STEEL IT polyurethane resin coating

Casing and terminal box cover have a special polyurethane resin coating with insertion of stainless steel leafing pigment AISI 316L.

Weight covers in stainless steel AISI 304.

All external hexagonal head screws are of stainless steel quality A2.

Coating is USDA approved for being used in the food sector where there is a high risk of accidental contact with processed food.

Salt spray tested for 500 hours.

Available for all models from all frame sizes.

## ■ MVSİ-BR



### Technical features

#### Ball burnishing treatment

This treatment takes place without use of additional material and concerns the casing and the terminal box cover, while weight covers are in stainless steel AISI 304.

Such treatment gives to the surfaces a polished aspect with hydrophobic effect which consistently improves their resistance to corrosion.

Suitable for environments where any painting or other surface coating have to be avoided as subject to frequent cleaning and sanitation, particularly in the chemical, pharmaceutical and food sectors.

Available on aluminium alloy motor-vibrators, so up to frame size 60 included.

# MVSI-SI add -SI suffix to part number when ordering Vibrator



## 2 poles - 3.000/3.600 rpm

### Three-phase

| DESCRIPTION |                 |      |                              |       | MECHANICAL SPECIFICATIONS |      |                            |      |      |      |              |      | ELECTRICAL SPECIFICATIONS |      |                   |              |       |      |
|-------------|-----------------|------|------------------------------|-------|---------------------------|------|----------------------------|------|------|------|--------------|------|---------------------------|------|-------------------|--------------|-------|------|
| Code        | Type            | SIZE | Ex<br>II2D<br>Temp.<br>class | •     | Static moment*<br>kgmm    |      | Centrifugal force<br>kg kN |      |      |      | Weight<br>kg |      | Max input power<br>W      |      | Max. current<br>A |              | Ia/In |      |
|             |                 |      |                              |       | 50Hz                      | 60Hz | 50Hz                       | 60Hz | 50Hz | 60Hz | 50Hz         | 60Hz | 50Hz                      | 60Hz | 400V<br>50Hz      | 460V<br>60Hz | 50Hz  | 60Hz |
| 600311      | MVSI 3/100-S02  | 00   | •                            | 120°C | 12,1                      | 12,1 | 122                        | 176  | 1,20 | 1,72 | 5,2          | 5,2  | 180                       | 180  | 0,35              | 0,30         | 2,68  | 3,00 |
| 600312      | MVSI 3/200-S02  | 01   | •                            | 120°C | 20,2                      | 16,2 | 203                        | 234  | 1,99 | 2,29 | 5,8          | 5,5  | 180                       | 180  | 0,35              | 0,30         | 2,68  | 3,00 |
| 600313      | MVSI 3/300-S02  | 10   | •                            | 120°C | 30,0                      | 22,5 | 302                        | 326  | 2,96 | 3,20 | 9,0          | 8,6  | 260                       | 270  | 0,60              | 0,50         | 3,47  | 4,20 |
| 600314      | MVSI 3/500-S02  | 20   | •                            | 120°C | 58,0                      | 34,8 | 584                        | 504  | 5,72 | 4,94 | 14,3         | 13,3 | 450                       | 500  | 0,80              | 0,75         | 4,21  | 4,80 |
| 600366      | MVSI 3/700-S02  | 20   | •                            | 120°C | 69,6                      | 46,4 | 700                        | 672  | 6,87 | 6,59 | 14,5         | 14,0 | 450                       | 500  | 0,80              | 0,75         | 4,21  | 4,80 |
| 600381      | MVSI 3/800-S02  | 30   | •                            | 120°C | 74,5                      | 55,9 | 750                        | 810  | 7,35 | 7,94 | 19,6         | 19,0 | 650                       | 685  | 1,10              | 1,00         | 3,83  | 6,00 |
| 600513      | MVSI 3/1100-S02 | 35   | •                            | 120°C | 110                       | 73,0 | 1105                       | 1057 | 10,8 | 10,4 | 24,0         | 23,0 | 1000                      | 1200 | 1,75              | 1,75         | 3,63  | 4,00 |
| 600491      | MVSI 3/1300-S08 | AF33 | •                            | -     | 128                       | 91,6 | 1290                       | 1327 | 12,7 | 13,0 | 27,0         | 25,7 | 1300                      | 1350 | 2,10              | 1,90         | 3,96  | 4,98 |
| 600504      | MVSI 3/1500-S08 | AF33 | •                            | -     | 146                       | 110  | 1470                       | 1595 | 14,4 | 15,6 | 25,3         | 24,0 | 1300                      | 1350 | 2,10              | 1,90         | 3,96  | 4,98 |
| 600502      | MVSI 3/1600-S02 | 50   | •                            | -     | 153                       | 102  | 1545                       | 1483 | 15,2 | 14,5 | 32,0         | 30,5 | 1400                      | 1450 | 2,30              | 2,00         | 4,95  | 6,12 |
| 600503      | MVSI 3/1800-S02 | 50   | •                            | -     | 179                       | 128  | 1802                       | 1853 | 17,7 | 18,2 | 33,0         | 31,5 | 2000                      | 2000 | 3,30              | 2,90         | 4,33  | 5,50 |
| 600256      | MVSI 3/2010-S90 | AF50 | •                            | 135°C | 205                       | 128  | 2059                       | 1853 | 20,2 | 18,2 | 48,7         | 46,3 | 2200                      | 2200 | 3,50              | 3,00         | 4,62  | 6,00 |
| 600257      | MVSI 3/2310-S90 | AF50 | •                            | 135°C | 230                       | 153  | 2316                       | 2224 | 22,7 | 21,8 | 49,6         | 47,1 | 2200                      | 2200 | 3,50              | 3,00         | 4,62  | 6,00 |
| 600470      | MVSI 3/3200-S02 | AF70 | •                            | -     | 344                       | 215  | 3457                       | 3112 | 33,9 | 30,5 | 94,0         | 90,0 | 4000                      | 4000 | 6,50              | 5,60         | 4,46  | 5,18 |
| 600471      | MVSI 3/4000-S02 | AF70 | •                            | -     | 387                       | 258  | 3890                       | 3735 | 38,2 | 36,6 | 96,0         | 92,0 | 4000                      | 4000 | 6,50              | 5,60         | 4,46  | 5,18 |
| 600472      | MVSI 3/5000-S02 | AF70 | •                            | -     | 515                       | 344  | 5187                       | 4979 | 50,9 | 48,8 | 109          | 105  | 5000                      | 5000 | 7,60              | 6,90         | 5,54  | 7,10 |
| 600276      | MVSI 3/6510-S02 | 90   | •                            | 135°C | 630                       | 443  | 6357                       | 6420 | 62,4 | 63,0 | 184          | 178  | 5500                      | 5500 | 9,20              | 8,00         | 6,45  | 7,20 |
| 600201      | MVSI 3/9000-S90 | 95   | -                            | -     | 895                       | 619  | 9007                       | 8970 | 88,4 | 88,0 | 215          | 210  | 10000                     | 9300 | 18,0              | 13,0         | 4,39  | 5,23 |

### Single-phase

| Code   | Type           | SIZE | Ex<br>II2D<br>Temp.<br>class | •     | Static moment*<br>kgmm |      | Centrifugal force<br>kg kN |      |      |      | Weight<br>kg |      | Max input power<br>W |      | Max. current<br>A |              | Ia/In |      |
|--------|----------------|------|------------------------------|-------|------------------------|------|----------------------------|------|------|------|--------------|------|----------------------|------|-------------------|--------------|-------|------|
|        |                |      |                              |       | 50Hz                   | 60Hz | 50Hz                       | 60Hz | 50Hz | 60Hz | 50Hz         | 60Hz | 50Hz                 | 60Hz | 220V<br>50Hz      | 115V<br>60Hz | 50Hz  | 60Hz |
| 600311 | MVSI 3/100-S02 | 00   | •                            | 120°C | 12,1                   | 12,1 | 122                        | 176  | 1,20 | 1,72 | 5,2          | 5,2  | 165                  | 165  | 0,75              | 1,52         | 1,67  | 2,24 |
| 600312 | MVSI 3/200-S02 | 01   | •                            | 120°C | 20,2                   | 16,2 | 203                        | 234  | 1,99 | 2,29 | 5,8          | 5,5  | 165                  | 165  | 0,75              | 1,52         | 1,67  | 2,24 |
| 600313 | MVSI 3/300-S02 | 10   | •                            | 120°C | 30,0                   | 22,5 | 302                        | 326  | 2,96 | 3,20 | 9,0          | 8,6  | 280                  | 280  | 1,25              | 2,40         | 2,48  | 3,52 |
| 600314 | MVSI 3/500-S02 | 20   | •                            | 120°C | 58,0                   | 34,8 | 584                        | 504  | 5,72 | 4,94 | 14,3         | 13,3 | 500                  | 500  | 2,30              | 4,50         | 3,35  | 4,22 |
| 600366 | MVSI 3/700-S02 | 20   | •                            | 120°C | 69,6                   | 46,4 | 700                        | 672  | 6,87 | 6,59 | 14,5         | 14,0 | 500                  | 500  | 2,30              | 4,50         | 3,35  | 4,22 |
| 600381 | MVSI 3/800-S02 | 30   | •                            | 120°C | 74,5                   | 55,9 | 750                        | 810  | 7,35 | 7,94 | 19,6         | 19,0 | 700                  | 750  | 3,25              | 7,00         | 4,00  | 4,14 |

\* Working moment = 2 x static moment.

# MVSI-SI add -SI suffix to part number when ordering Vibrator

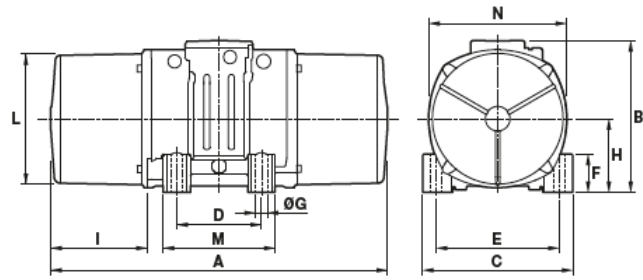


Fig. A

### DIMENSIONAL SPECIFICATIONS (mm)

| Type            | Fig. | A   | B   | C   | D       | E   | Holes |    | F   | H     | I     | L   | M   | N   | Capacitor (µF) |           | Cable entry thread |
|-----------------|------|-----|-----|-----|---------|-----|-------|----|-----|-------|-------|-----|-----|-----|----------------|-----------|--------------------|
|                 |      |     |     |     |         |     | ØG    | N° |     |       |       |     |     |     | 220V 50Hz      | 115V 60Hz |                    |
| MVSI 3/100-S02  | A    | 211 | 150 | 125 | 62-74** | 106 | 9     | 4  | 22  | 61    | 46    | 103 | 98  | 117 | -              | -         | M20x1,5            |
| MVSI 3/200-S02  | A    | 235 | 150 | 125 | 62-74** | 106 | 9     | 4  | 22  | 61    | 58    | 103 | 98  | 117 | -              | -         | M20x1,5            |
| MVSI 3/300-S02  | A    | 255 | 171 | 152 | 90      | 125 | 13    | 4  | 28  | 73    | 54    | 127 | 128 | 141 | -              | -         | M20x1,5            |
| MVSI 3/500-S02  | A    | 288 | 203 | 167 | 105     | 140 | 13    | 4  | 30  | 82,5  | 65    | 145 | 146 | 160 | -              | -         | M25x1,5            |
| MVSI 3/700-S02  | A    | 288 | 203 | 167 | 105     | 140 | 13    | 4  | 30  | 82,5  | 65    | 145 | 146 | 160 | -              | -         | M25x1,5            |
| MVSI 3/800-S02  | A    | 308 | 211 | 205 | 120     | 170 | 17    | 4  | 45  | 93,5  | 63    | 170 | 174 | 182 | -              | -         | M25x1,5            |
| MVSI 3/1100-S02 | A    | 435 | 224 | 205 | 120     | 170 | 17    | 4  | 42  | 104,5 | 117,5 | 187 | 162 | 203 | -              | -         | M25x1,5            |
| MVSI 3/1300-S08 | A    | 375 | 217 | 215 | 100     | 180 | 17    | 4  | 47  | 93,5  | 106   | 170 | 145 | 182 | -              | -         | M25x1,5            |
| MVSI 3/1500-S08 | A    | 375 | 217 | 215 | 100     | 180 | 17    | 4  | 47  | 93,5  | 106   | 170 | 145 | 182 | -              | -         | M25x1,5            |
| MVSI 3/1600-S02 | A    | 430 | 244 | 230 | 140     | 190 | 17    | 4  | 45  | 116   | 99    | 207 | 190 | 225 | -              | -         | M25x1,5            |
| MVSI 3/1800-S02 | A    | 430 | 244 | 230 | 140     | 190 | 17    | 4  | 45  | 116   | 99    | 207 | 190 | 225 | -              | -         | M25x1,5            |
| MVSI 3/2010-S90 | A    | 458 | 232 | 230 | 140     | 190 | 17    | 4  | 49  | 104   | 101,5 | 183 | 180 | 200 | -              | -         | M25x1,5            |
| MVSI 3/2310-S90 | A    | 458 | 232 | 230 | 140     | 190 | 17    | 4  | 49  | 104   | 101,5 | 183 | 180 | 200 | -              | -         | M25x1,5            |
| MVSI 3/3200-S02 | A    | 560 | 290 | 310 | 155     | 255 | 25    | 4  | 90  | 130   | 137   | 238 | 210 | 253 | -              | -         | M25x1,5            |
| MVSI 3/4000-S02 | A    | 560 | 290 | 310 | 155     | 255 | 25    | 4  | 90  | 130   | 137   | 238 | 210 | 253 | -              | -         | M25x1,5            |
| MVSI 3/5000-S02 | A    | 560 | 290 | 310 | 155     | 255 | 25    | 4  | 90  | 130   | 137   | 238 | 210 | 253 | -              | -         | M25x1,5            |
| MVSI 3/6510-S02 | A    | 680 | 370 | 390 | 200     | 320 | 28    | 4  | 90  | 180   | 160   | 330 | 270 | 350 | -              | -         | M32x1,5            |
| MVSI 3/9000-S90 | A    | 629 | 395 | 392 | 200     | 320 | 28    | 4  | 100 | 192   | 135   | 355 | 270 | 375 | -              | -         | M32x1,5            |

| Type           | Fig. | A   | B   | C   | D       | E   | Holes |    | F  | H    | I  | L   | M   | N   | Capacitor (µF) |           | Cable entry thread |
|----------------|------|-----|-----|-----|---------|-----|-------|----|----|------|----|-----|-----|-----|----------------|-----------|--------------------|
|                |      |     |     |     |         |     | ØG    | N° |    |      |    |     |     |     | 220V 50Hz      | 115V 60Hz |                    |
| MVSI 3/100-S02 | A    | 211 | 150 | 125 | 62-74** | 106 | 9     | 4  | 22 | 61   | 46 | 103 | 98  | 117 | 10             | 28        | M20x1,5            |
| MVSI 3/200-S02 | A    | 235 | 150 | 125 | 62-74** | 106 | 9     | 4  | 22 | 61   | 58 | 103 | 98  | 117 | 10             | 35        | M20x1,5            |
| MVSI 3/300-S02 | A    | 255 | 171 | 152 | 90      | 125 | 13    | 4  | 28 | 73   | 54 | 127 | 128 | 141 | 16             | 25        | M20x1,5            |
| MVSI 3/500-S02 | A    | 288 | 203 | 167 | 105     | 140 | 13    | 4  | 30 | 82,5 | 65 | 145 | 146 | 160 | 12,5           | 50        | M25x1,5            |
| MVSI 3/700-S02 | A    | 288 | 203 | 167 | 105     | 140 | 13    | 4  | 30 | 82,5 | 65 | 145 | 146 | 160 | 12,5           | -         | M25x1,5            |
| MVSI 3/800-S02 | A    | 308 | 211 | 205 | 120     | 170 | 17    | 4  | 45 | 93,5 | 63 | 170 | 174 | 182 | 25             | 90        | M25x1,5            |

la/ln = ratio between start-up current and maximum current. \*\* Slot.  
 Several sizes are available with different mounting bolt patterns. Please contact sales office at Italtibras.



# MVSI-SI add -SI suffix to part number when ordering Vibrator



## 4 poles - 1.500/1.800 rpm

### Three-phase

| DESCRIPTION |                   |      | MECHANICAL SPECIFICATIONS |                        |      |                            |       |      |      |              | ELECTRICAL SPECIFICATIONS |                      |       |                   |              |       |      |
|-------------|-------------------|------|---------------------------|------------------------|------|----------------------------|-------|------|------|--------------|---------------------------|----------------------|-------|-------------------|--------------|-------|------|
| Code        | Type              | SIZE | Ex IIP2 Temp. class       | Static moment*<br>kgmm |      | Centrifugal force<br>kg kN |       |      |      | Weight<br>kg |                           | Max input power<br>W |       | Max. current<br>A |              | Ia/In |      |
|             |                   |      |                           | 50Hz                   | 60Hz | 50Hz                       | 60Hz  | 50Hz | 60Hz | 50Hz         | 60Hz                      | 50Hz                 | 60Hz  | 400V<br>50Hz      | 460V<br>60Hz | 50Hz  | 60Hz |
| 601340      | MVSI 15/35-S02    | 00   | • 120°C                   | 12,1                   | 12,1 | 30,5                       | 43,9  | 0,30 | 0,43 | 5,2          | 5,2                       | 85                   | 95    | 0,21              | 0,20         | 1,78  | 1,95 |
| 601341      | MVSI 15/80-S02    | 01   | • 120°C                   | 32,3                   | 20,2 | 81,2                       | 73,2  | 0,80 | 0,72 | 6,2          | 5,8                       | 85                   | 95    | 0,21              | 0,20         | 1,78  | 1,95 |
| 601366      | MVSI 15/100-S02   | 01   | • 120°C                   | 37,9                   | 32,3 | 95,3                       | 117   | 0,93 | 1,15 | 6,6          | 6,2                       | 85                   | 95    | 0,21              | 0,20         | 1,78  | 1,95 |
| 601367      | MVSI 15/200-S02   | 10   | • 120°C                   | 84,2                   | 58,8 | 213                        | 214   | 2,09 | 2,10 | 11,7         | 10,7                      | 170                  | 170   | 0,41              | 0,40         | 2,34  | 2,75 |
| 601372      | MVSI 15/400-S02   | 20   | • 120°C                   | 163                    | 113  | 412                        | 411   | 4,04 | 4,03 | 18,5         | 16,5                      | 300                  | 350   | 0,60              | 0,60         | 3,33  | 3,50 |
| 601373      | MVSI 15/550-S02   | 20   | • 120°C                   | 219                    | 163  | 552                        | 592   | 5,42 | 5,81 | 20,7         | 18,5                      | 300                  | 350   | 0,60              | 0,60         | 3,33  | 3,50 |
| 601408      | MVSI 15/700-S02   | 30   | • 120°C                   | 286                    | 209  | 720                        | 760   | 7,06 | 7,46 | 26,2         | 24,5                      | 525                  | 665   | 0,92              | 0,98         | 3,48  | 4,43 |
| 601513      | MVSI 15/900-S02   | 30   | • 120°C                   | 357                    | 286  | 900                        | 1037  | 8,83 | 10,2 | 29,0         | 26,2                      | 525                  | 665   | 0,92              | 0,98         | 3,48  | 3,43 |
| 601524      | MVSI 15/1100-S02  | 35   | • 120°C                   | 415                    | 271  | 1045                       | 982   | 10,3 | 9,63 | 32,5         | 30,5                      | 550                  | 680   | 0,95              | 0,95         | 4,45  | 4,89 |
| 601217      | MVSI 15/1410-S02  | 40   | • 120°C                   | 561                    | 400  | 1413                       | 1449  | 13,9 | 14,2 | 41,2         | 37,5                      | 900                  | 1050  | 1,45              | 1,50         | 4,10  | 4,20 |
| 601219      | MVSI 15/1710-S02  | 50   | • 135°C                   | 715                    | 485  | 1798                       | 1757  | 17,6 | 17,2 | 47,8         | 42,5                      | 1100                 | 1200  | 2,00              | 1,90         | 4,29  | 4,89 |
| 601267      | MVSI 15/2000-S02  | 50   | • 135°C                   | 817                    | 561  | 2054                       | 2033  | 20,1 | 19,9 | 50,5         | 44,5                      | 1350                 | 1450  | 2,50              | 2,30         | 4,30  | 4,90 |
| 601220      | MVSI 15/2410-S08  | 60   | • 150°C                   | 962                    | 674  | 2420                       | 2444  | 23,7 | 24,0 | 70,0         | 63,5                      | 1600                 | 1700  | 3,20              | 3,00         | 6,09  | 7,23 |
| 601268      | MVSI 15/3000-S08  | 60   | • 135°C                   | 1235                   | 858  | 3106                       | 3107  | 30,5 | 30,5 | 80,0         | 71,0                      | 1900                 | 2000  | 3,80              | 3,50         | 6,50  | 7,50 |
| 601221      | MVSI 15/3810-S02  | 70   | • 135°C                   | 1526                   | 1034 | 3840                       | 3744  | 37,7 | 36,7 | 119          | 110                       | 2200                 | 2500  | 3,90              | 3,90         | 7,11  | 6,92 |
| 601269      | MVSI 15/4300-S02  | 70   | • 135°C                   | 1720                   | 1173 | 4326                       | 4250  | 42,4 | 41,7 | 123          | 117                       | 2500                 | 2800  | 4,80              | 4,65         | 5,90  | 7,10 |
| 601211      | MVSI 15/5010-S02  | 80   | • 135°C                   | 1990                   | 1364 | 5007                       | 4941  | 49,1 | 48,5 | 161          | 153                       | 3600                 | 3400  | 6,00              | 5,00         | 7,02  | 8,00 |
| 601447      | MVSI 15/6000-S02  | 80   | • 135°C                   | 2248                   | 1677 | 5654                       | 6075  | 55,5 | 59,6 | 164          | 155                       | 3600                 | 3400  | 6,00              | 5,00         | 7,02  | 8,00 |
| 601165      | MVSI 15/7000-S02  | 90   | • 135°C                   | 2598                   | 1822 | 6536                       | 6600  | 64,1 | 64,7 | 208          | 195                       | 6000                 | 6000  | 10,5              | 9,00         | 6,48  | 7,67 |
| 601166      | MVSI 15/9000-S90  | 95   | □ 135°C                   | 3260                   | 2260 | 8199                       | 8183  | 80,4 | 80,3 | 225          | 210                       | 7000                 | 8000  | 11,6              | 11,5         | 5,43  | 5,57 |
| 601204      | MVSI 15/9500-S02  | 97   | □ 135°C                   | 3346                   | 2462 | 8416                       | 8916  | 82,6 | 87,5 | 306          | 292                       | 7500                 | 8500  | 12,2              | 12,0         | 6,56  | 6,67 |
| 601205      | MVSI 15/11500-S02 | 100  | □ 135°C                   | 4544                   | 3166 | 11430                      | 11467 | 113  | 112  | 430          | 411                       | 10000                | 10500 | 17,5              | 15,5         | 7,03  | 8,00 |
| 601271      | MVSI 15/14500-S02 | 100  | □ 135°C                   | 5614                   | 4126 | 14120                      | 14940 | 138  | 147  | 458          | 424                       | 11000                | 12000 | 20,0              | 20,0         | 8,00  | 8,00 |

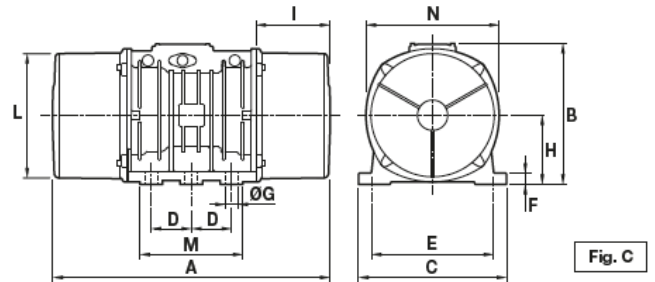
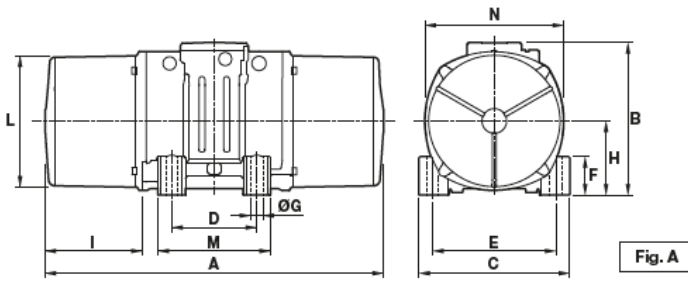
### Single-phase

| Code   | Type            | SIZE | Ex IIP2 Temp. class | Static moment*<br>kgmm |      | Centrifugal force<br>kg kN |      |      |      | Weight<br>kg |      | Max input power<br>W |      | Max. current<br>A |              | Ia/In |      |
|--------|-----------------|------|---------------------|------------------------|------|----------------------------|------|------|------|--------------|------|----------------------|------|-------------------|--------------|-------|------|
|        |                 |      |                     | 50Hz                   | 60Hz | 50Hz                       | 60Hz | 50Hz | 60Hz | 50Hz         | 60Hz | 50Hz                 | 60Hz | 220V<br>50Hz      | 115V<br>60Hz | 50Hz  | 60Hz |
| 601340 | MVSI 15/35-S02  | 00   | • 120°C             | 12,1                   | 12,1 | 30,5                       | 43,9 | 0,30 | 0,43 | 5,2          | 5,2  | 90                   | 100  | 0,43              | 1,00         | 1,20  | 1,30 |
| 601341 | MVSI 15/80-S02  | 01   | • 120°C             | 32,3                   | 20,2 | 81,2                       | 73,2 | 0,80 | 0,72 | 6,2          | 5,8  | 90                   | 100  | 0,43              | 1,00         | 1,20  | 1,30 |
| 601366 | MVSI 15/100-S02 | 01   | • 120°C             | 37,9                   | 32,3 | 95,3                       | 117  | 0,93 | 1,15 | 6,6          | 6,2  | 90                   | 100  | 0,43              | 1,00         | 1,20  | 1,30 |
| 601367 | MVSI 15/200-S02 | 10   | • 120°C             | 84,2                   | 58,8 | 213                        | 214  | 2,09 | 2,10 | 11,7         | 10,7 | 210                  | 230  | 1,00              | 2,00         | 1,50  | 1,85 |
| 601372 | MVSI 15/400-S02 | 20   | • 120°C             | 163                    | 113  | 412                        | 411  | 4,04 | 4,03 | 18,5         | 16,5 | 240                  | 320  | 1,20              | 2,80         | 2,50  | 2,21 |
| 601373 | MVSI 15/550-S02 | 20   | • 120°C             | 219                    | 163  | 552                        | 592  | 5,42 | 5,81 | 20,7         | 18,5 | 240                  | 320  | 1,20              | 2,80         | 2,50  | 2,21 |
| 601408 | MVSI 15/700-S02 | 30   | • 120°C             | 286                    | 209  | 720                        | 760  | 7,06 | 7,46 | 26,2         | 24,5 | 450                  | 550  | 2,15              | 5,15         | 5,44  | 3,63 |

\* Working moment = 2 x static moment. □ CSA certification on request, with feeding line included.



# MVSI-SI add -SI suffix to part number when ordering Vibrator



## DIMENSIONAL SPECIFICATIONS (mm)

| Type              | Fig. | A                      | B   | C   | D       | E   | Holes |    | F   | H     | I                      | L   | M   | N   | Capacitor (µF) |           | Cable entry thread |
|-------------------|------|------------------------|-----|-----|---------|-----|-------|----|-----|-------|------------------------|-----|-----|-----|----------------|-----------|--------------------|
|                   |      |                        |     |     |         |     | ØG    | N° |     |       |                        |     |     |     | 220V 50Hz      | 115V 60Hz |                    |
| MVSI 15/35-S02    | A    | 211                    | 150 | 125 | 62-74** | 106 | 9     | 4  | 22  | 61    | 46                     | 103 | 98  | 117 | -              | -         | M20x1,5            |
| MVSI 15/80-S02    | A    | 249                    | 150 | 125 | 62-74** | 106 | 9     | 4  | 22  | 61    | 65                     | 103 | 98  | 117 | -              | -         | M20x1,5            |
| MVSI 15/100-S02   | A    | 249                    | 150 | 125 | 62-74** | 106 | 9     | 4  | 22  | 61    | 65                     | 103 | 98  | 117 | -              | -         | M20x1,5            |
| MVSI 15/200-S02   | A    | 301                    | 171 | 152 | 90      | 125 | 13    | 4  | 28  | 73    | 77                     | 127 | 128 | 141 | -              | -         | M20x1,5            |
| MVSI 15/400-S02   | A    | 344                    | 203 | 167 | 105     | 140 | 13    | 4  | 30  | 82,5  | 93                     | 145 | 146 | 160 | -              | -         | M25x1,5            |
| MVSI 15/550-S02   | A    | 386                    | 203 | 167 | 105     | 140 | 13    | 4  | 30  | 82,5  | 114                    | 145 | 146 | 160 | -              | -         | M25x1,5            |
| MVSI 15/700-S02   | A    | 394                    | 211 | 205 | 120     | 170 | 17    | 4  | 45  | 93,5  | 106                    | 170 | 174 | 182 | -              | -         | M25x1,5            |
| MVSI 15/900-S02   | A    | 394                    | 211 | 205 | 120     | 170 | 17    | 4  | 45  | 93,5  | 106                    | 170 | 174 | 182 | -              | -         | M25x1,5            |
| MVSI 15/1100-S02  | A    | 435                    | 224 | 205 | 120     | 170 | 17    | 4  | 42  | 104,5 | 117,5                  | 187 | 162 | 203 | -              | -         | M25x1,5            |
| MVSI 15/1410-S02  | A    | 448                    | 244 | 230 | 140     | 190 | 17    | 4  | 45  | 116   | 108                    | 207 | 190 | 225 | -              | -         | M25x1,5            |
| MVSI 15/1710-S02  | A    | 500                    | 244 | 230 | 140     | 190 | 17    | 4  | 45  | 116   | 134                    | 207 | 190 | 225 | -              | -         | M25x1,5            |
| MVSI 15/2000-S02  | A    | 574(50Hz)<br>500(60Hz) | 244 | 230 | 140     | 190 | 17    | 4  | 45  | 116   | 171(50Hz)<br>134(60Hz) | 207 | 190 | 225 | -              | -         | M25x1,5            |
| MVSI 15/2410-S08  | A    | 537                    | 272 | 275 | 155     | 225 | 22    | 4  | 70  | 130   | 137                    | 238 | 210 | 253 | -              | -         | M25x1,5            |
| MVSI 15/3000-S08  | A    | 617                    | 272 | 275 | 155     | 225 | 22    | 4  | 70  | 130   | 177                    | 238 | 210 | 253 | -              | -         | M25x1,5            |
| MVSI 15/3810-S02  | A    | 584                    | 321 | 310 | 155     | 255 | 23,5  | 4  | 77  | 157   | 137                    | 277 | 215 | 295 | -              | -         | M25x1,5            |
| MVSI 15/4300-S02  | A    | 666(50Hz)<br>584(60Hz) | 321 | 310 | 155     | 255 | 23,5  | 4  | 77  | 157   | 178(50Hz)<br>137(60Hz) | 277 | 215 | 295 | -              | -         | M25x1,5            |
| MVSI 15/5010-S02  | A    | 630                    | 347 | 340 | 180     | 280 | 26    | 4  | 80  | 165   | 150                    | 303 | 240 | 320 | -              | -         | M32x1,5            |
| MVSI 15/6000-S02  | A    | 630                    | 347 | 340 | 180     | 280 | 26    | 4  | 80  | 165   | 150                    | 303 | 240 | 320 | -              | -         | M32x1,5            |
| MVSI 15/7000-S02  | A    | 680                    | 370 | 390 | 200     | 320 | 28    | 4  | 90  | 180   | 160                    | 330 | 270 | 350 | -              | -         | M32x1,5            |
| MVSI 15/9000-S90  | A    | 629                    | 395 | 392 | 200     | 320 | 28    | 4  | 100 | 192   | 134,5                  | 355 | 270 | 375 | -              | -         | M32x1,5            |
| MVSI 15/9500-S02  | C    | 862                    | 437 | 460 | 125     | 380 | 39    | 6  | 35  | 215   | 230                    | 387 | 320 | 414 | -              | -         | M32x1,5            |
| MVSI 15/11500-S90 | C    | 990                    | 454 | 530 | 140     | 440 | 45    | 6  | 38  | 230   | 240                    | 423 | 370 | 448 | -              | -         | M32x1,5            |
| MVSI 15/14500-S90 | C    | 990                    | 454 | 530 | 140     | 440 | 45    | 6  | 38  | 230   | 240                    | 423 | 370 | 448 | -              | -         | M32x1,5            |

| Type            | Fig. | A   | B   | C   | D       | E   | Holes |    | F  | H    | I   | L   | M   | N   | Capacitor (µF) |             | Cable entry thread |
|-----------------|------|-----|-----|-----|---------|-----|-------|----|----|------|-----|-----|-----|-----|----------------|-------------|--------------------|
|                 |      |     |     |     |         |     | ØG    | N° |    |      |     |     |     |     | 220V 50Hz      | 115V 60Hz   |                    |
| MVSI 15/35-S02  | A    | 211 | 150 | 125 | 62-74** | 106 | 9     | 4  | 22 | 61   | 46  | 103 | 98  | 117 | 3,15           | 25          | M20x1,5            |
| MVSI 15/80-S02  | A    | 249 | 150 | 125 | 62-74** | 106 | 9     | 4  | 22 | 61   | 65  | 103 | 98  | 117 | 3,15           | 25          | M20x1,5            |
| MVSI 15/100-S02 | A    | 249 | 150 | 125 | 62-74** | 106 | 9     | 4  | 22 | 61   | 65  | 103 | 98  | 117 | 3,15           | 25          | M20x1,5            |
| MVSI 15/200-S02 | A    | 301 | 171 | 152 | 90      | 125 | 13    | 4  | 28 | 73   | 77  | 127 | 128 | 141 | 5              | 25          | M20x1,5            |
| MVSI 15/400-S02 | A    | 344 | 203 | 167 | 105     | 140 | 13    | 4  | 30 | 82,5 | 93  | 145 | 146 | 160 | 120<br>+20●    | 35          | M25x1,5            |
| MVSI 15/550-S02 | A    | 386 | 203 | 167 | 105     | 140 | 13    | 4  | 30 | 82,5 | 114 | 145 | 146 | 160 | 120<br>+20●    | 35<br>+10●  | M25x1,5            |
| MVSI 15/700-S02 | A    | 394 | 211 | 205 | 120     | 170 | 17    | 4  | 45 | 93,5 | 106 | 170 | 174 | 182 | 160<br>+80●    | 40<br>+120● | M25x1,5            |

la/ln = ratio between start-up current and maximum current. \*\* Slot. ○ Running capacitor / ● Additional capacitor only for start-up.  
Several sizes are available with different mounting bolt patterns. Please contact sales office at Italtibras.

# MVSI-SI add -SI suffix to part number when ordering Vibrator



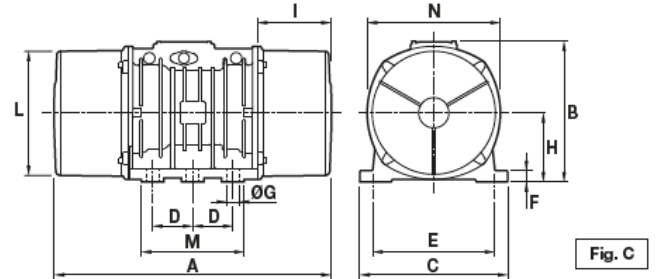
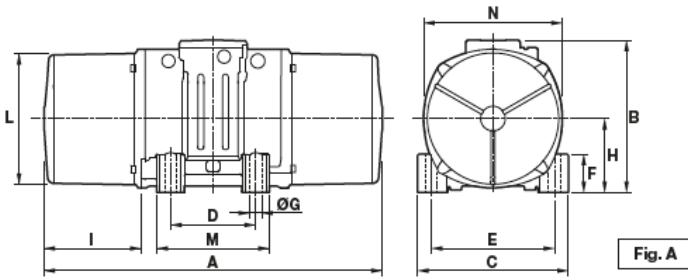
## 6 poles - 1.000/1.200 rpm

### Three-phase

| DESCRIPTION |                     |      |                     | MECHANICAL SPECIFICATIONS |       |                         |       |      |      |              |      | ELECTRICAL SPECIFICATIONS |       |                   |              |       |      |
|-------------|---------------------|------|---------------------|---------------------------|-------|-------------------------|-------|------|------|--------------|------|---------------------------|-------|-------------------|--------------|-------|------|
| Code        | Type                | SIZE | Ex II2D Temp. class | Static moment*<br>kgmm    |       | Centrifugal force<br>kg |       |      |      | Weight<br>kg |      | Max input power<br>W      |       | Max. current<br>A |              | Ia/In |      |
|             |                     |      |                     | 50Hz                      | 60Hz  | 50Hz                    | 60Hz  | 50Hz | 60Hz | 50Hz         | 60Hz | 50Hz                      | 60Hz  | 400V<br>50Hz      | 460V<br>60Hz | 50Hz  | 60Hz |
| 602296      | MVSI 10/40-S02      | 10   | • 120°C             | 30,0                      | 30,0  | 33,5                    | 48,3  | 0,33 | 0,47 | 9,0          | 9,0  | 120                       | 135   | 0,30              | 0,30         | 1,90  | 2,07 |
| 602297      | MVSI 10/100-S02     | 10   | • 120°C             | 84,2                      | 84,2  | 94,3                    | 136   | 0,93 | 1,33 | 11,9         | 11,9 | 120                       | 135   | 0,30              | 0,30         | 1,90  | 2,07 |
| 602298      | MVSI 10/200-S02     | 20   | • 120°C             | 163                       | 163   | 183                     | 264   | 1,80 | 2,59 | 18,1         | 18,1 | 185                       | 205   | 0,50              | 0,50         | 2,72  | 3,10 |
| 602314      | MVSI 10/310-S02     | 30   | • 120°C             | 286                       | 209   | 321                     | 338   | 3,15 | 3,32 | 25,7         | 24,0 | 350                       | 380   | 0,72              | 0,68         | 2,63  | 2,79 |
| 602241      | MVSI 10/400-S02     | 30   | • 120°C             | 357                       | 357   | 400                     | 576   | 3,93 | 5,65 | 29,0         | 29,0 | 350                       | 380   | 0,72              | 0,68         | 2,63  | 2,79 |
| 602402      | MVSI 10/550-S02     | 35   | • 120°C             | 457                       | 457   | 512                     | 737   | 5,02 | 7,23 | 32,6         | 32,6 | 350                       | 380   | 0,75              | 0,68         | 2,53  | 3,68 |
| 602403      | MVSI 10/650-S02     | 35   | • -                 | 580                       | 457   | 650                     | 737   | 6,37 | 7,23 | 35,5         | 32,6 | 350                       | 380   | 0,95              | 0,88         | 3,16  | 3,86 |
| 602380      | MVSI 10/810-S08     | 40   | • 135°C             | 723                       | 561   | 809                     | 905   | 7,94 | 8,88 | 44,0         | 40,0 | 680                       | 760   | 1,40              | 1,35         | 2,79  | 3,33 |
| 602381      | MVSI 10/1110-S08    | 50   | • 135°C             | 1012                      | 715   | 1132                    | 1151  | 11,1 | 11,3 | 55,8         | 48,8 | 750                       | 750   | 1,65              | 1,50         | 3,33  | 4,13 |
| 602382      | MVSI 10/1400-S08    | 50   | • 135°C             | 1274                      | 921   | 1424                    | 1483  | 14,0 | 14,5 | 63,0         | 55,5 | 950                       | 1000  | 1,80              | 1,70         | 3,05  | 3,65 |
| 602406      | MVSI 10/1610-S08    | 60   | • 135°C             | 1464                      | 962   | 1638                    | 1549  | 16,1 | 15,2 | 80,0         | 70,0 | 1100                      | 1300  | 2,20              | 2,20         | 4,21  | 4,05 |
| 602407      | MVSI 10/2100-S08    | 60   | • 135°C             | 1927                      | 1318  | 2154                    | 2102  | 21,1 | 20,6 | 92,0         | 82,0 | 1500                      | 1770  | 3,00              | 2,75         | 3,42  | 4,00 |
| 602167      | MVSI 10/2610-S02    | 70   | • 135°C             | 2326                      | 1720  | 2601                    | 2747  | 25,5 | 26,9 | 130          | 116  | 1960                      | 2100  | 4,10              | 3,75         | 5,35  | 5,60 |
| 602230      | MVSI 10/3000-S02    | 70   | • 135°C             | 2690                      | 1940  | 3007                    | 3124  | 29,5 | 30,6 | 145          | 130  | 2200                      | 2400  | 4,50              | 4,30         | 4,35  | 4,81 |
| 602154      | MVSI 10/3810-S02    | 80   | • 135°C             | 3422                      | 2380  | 3826                    | 3831  | 37,5 | 37,6 | 188          | 170  | 2500                      | 3000  | 5,10              | 5,00         | 5,91  | 6,00 |
| 602204      | MVSI 10/4700-S02    | 80   | • 135°C             | 4206                      | 2887  | 4701                    | 4648  | 46,1 | 46,0 | 204          | 183  | 3200                      | 3600  | 6,50              | 6,00         | 5,24  | 5,50 |
| 602350      | MVSI 10/5150-S02    | 80   | • 135°C             | 4678                      | 3230  | 5230                    | 5200  | 51,3 | 51,0 | 225          | 200  | 3200                      | 3600  | 6,50              | 6,00         | 5,24  | 5,50 |
| 602138      | MVSI 10/5200-S02    | 90   | • 135°C             | 4658                      | 3288  | 5208                    | 5293  | 51,1 | 51,9 | 238          | 215  | 3800                      | 4000  | 7,00              | 6,50         | 4,71  | 5,08 |
| 602351      | MVSI 10/5700-S02    | 90   | • 135°C             | 5044                      | 3478  | 5650                    | 5600  | 55,4 | 54,9 | 240          | 220  | 3800                      | 4000  | 7,00              | 6,50         | 4,71  | 5,08 |
| 602091      | MVSI 10/6500-S02    | 90   | • 135°C             | 5838                      | 4055  | 6527                    | 6529  | 64,0 | 64,0 | 268          | 258  | 4300                      | 5000  | 8,20              | 8,10         | 4,51  | 5,83 |
| 602136      | MVSI 10/6600-S02 Δ  | 97   | • 135°C             | 6083                      | 3979  | 6799                    | 6405  | 66,7 | 62,8 | 308          | 280  | 5000                      | 5900  | 10,0              | 9,80         | 5,61  | 5,82 |
| 602352      | MVSI 10/7000-S02    | 90   | • 135°C             | 6272                      | 4348  | 7013                    | 7000  | 68,8 | 68,7 | 275          | 263  | 4300                      | 5000  | 8,20              | 8,10         | 4,51  | 5,83 |
| 602092      | MVSI 10/8000-S90    | 95   | □ 135°C             | 7197                      | 4967  | 8046                    | 7996  | 78,9 | 78,4 | 315          | 277  | 7000                      | 7500  | 12,6              | 11,3         | 4,59  | 5,58 |
| 602093      | MVSI 10/9000-S90    | 95   | □ 135°C             | 7752                      | 5385  | 8666                    | 8669  | 85,0 | 85,0 | 326          | 289  | 7500                      | 8200  | 14,0              | 12,9         | 4,13  | 4,88 |
| 602137      | MVSI 10/10000-S02   | 97   | □ 135°C             | 8673                      | 5664  | 9695                    | 9117  | 95,1 | 89,4 | 372          | 332  | 7600                      | 8000  | 13,5              | 12,4         | 4,72  | 4,92 |
| 602349      | MVSI 10/11200-S02   | 97   | □ 135°C             | 9983                      | 6896  | 11160                   | 11100 | 109  | 109  | 398          | 358  | 7600                      | 8000  | 13,5              | 12,4         | 4,72  | 4,92 |
| 602134      | MVSI 10/12000-S90 Δ | 100  | □ 135°C             | 10996                     | 7543  | 12294                   | 12141 | 119  | 119  | 500          | 445  | 9000                      | 9500  | 16,3              | 15,0         | 5,21  | 5,73 |
| 602227      | MVSI 10/13000-S02   | 97   | □ 135°C             | 11510                     | 8158  | 12867                   | 13130 | 126  | 129  | 445          | 395  | 9600                      | 10000 | 17,0              | 16,0         | 4,98  | 5,00 |
| 602142      | MVSI 10/15000-S02   | 105  | □ -                 | 12662                     | 8700  | 14155                   | 14004 | 139  | 137  | 643          | 605  | 10600                     | 11270 | 19,0              | 18,0         | 5,88  | 5,78 |
| 602143      | MVSI 10/17500-S02   | 105  | □ -                 | 15500                     | 10439 | 17327                   | 16804 | 170  | 165  | 691          | 642  | 13000                     | 13700 | 24,5              | 23,0         | 5,71  | 5,96 |
| 602244      | MVSI 10/19500-S02   | 105  | □ -                 | 17947                     | 11430 | 20062                   | 18400 | 197  | 181  | 717          | 650  | 13000                     | 13700 | 24,5              | 23,0         | 5,71  | 5,96 |
| 602144      | MVSI 10/22000-S90   | 110  | □ -                 | 20025                     | 12533 | 22386                   | 20208 | 220  | 198  | 926          | 896  | 19000                     | 19000 | 33,0              | 25,5         | 4,67  | 5,88 |
| 602273      | MVSI 10/25000-S90   | 110  | □ -                 | 22364                     | 14785 | 25000                   | 23800 | 245  | 233  | 960          | 928  | 19000                     | 19000 | 33,0              | 25,5         | 4,67  | 5,88 |
| 602336      | MVSI 10/30000-S02   | 120  | -                   | 27285                     | 18760 | 30560                   | 30200 | 300  | 296  | 1200         | 1050 | 24000                     | 25800 | 40,0              | 38,0         | 4,89  | 5,39 |

\* Working moment = 2 x static moment.    Δ For special application.    □ CSA certification on request, with feeding line included.

# MVSI-SI add -SI suffix to part number when ordering Vibrator

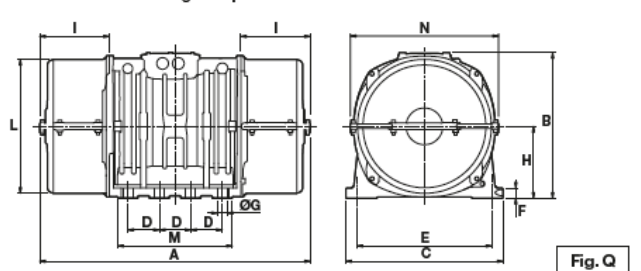
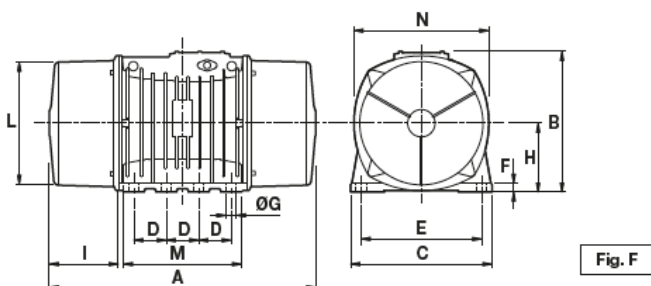


## DIMENSIONAL SPECIFICATIONS (mm)

| Type              | Fig. | A                        | B   | C   | D   | E   | Holes |    | F   | H     | I                        | L   | M   | N   | Cable entry thread |
|-------------------|------|--------------------------|-----|-----|-----|-----|-------|----|-----|-------|--------------------------|-----|-----|-----|--------------------|
|                   |      |                          |     |     |     |     | ØG    | N° |     |       |                          |     |     |     |                    |
| MVSI 10/40-S02    | A    | 255                      | 171 | 152 | 90  | 125 | 13    | 4  | 28  | 73,0  | 54,0                     | 127 | 128 | 141 | M20X1,5            |
| MVSI 10/100-S02   | A    | 301                      | 171 | 152 | 90  | 125 | 13    | 4  | 28  | 73,0  | 77,0                     | 127 | 128 | 141 | M20X1,5            |
| MVSI 10/200-S02   | A    | 344                      | 203 | 167 | 105 | 140 | 13    | 4  | 30  | 82,5  | 93,0                     | 145 | 146 | 160 | M25X1,5            |
| MVSI 10/310-S02   | A    | 394                      | 211 | 205 | 120 | 170 | 17    | 4  | 45  | 93,5  | 106                      | 170 | 174 | 182 | M25X1,5            |
| MVSI 10/400-S02   | A    | 394                      | 211 | 205 | 120 | 170 | 17    | 4  | 45  | 93,5  | 106                      | 170 | 174 | 182 | M25X1,5            |
| MVSI 10/550-S02   | A    | 435                      | 224 | 205 | 120 | 170 | 17    | 4  | 42  | 104,5 | 117,5                    | 187 | 162 | 203 | M25X1,5            |
| MVSI 10/650-S02   | A    | 480(50Hz)<br>435(60Hz)   | 224 | 205 | 120 | 170 | 17    | 4  | 42  | 104,5 | 140(50Hz)<br>117,5(60Hz) | 187 | 162 | 203 | M25X1,5            |
| MVSI 10/810-S08   | A    | 500(50Hz)<br>448(60Hz)   | 244 | 230 | 140 | 190 | 17    | 4  | 45  | 116   | 134(50Hz)<br>108(60Hz)   | 207 | 190 | 225 | M25X1,5            |
| MVSI 10/1110-S08  | A    | 574                      | 244 | 230 | 140 | 190 | 17    | 4  | 45  | 116   | 171                      | 207 | 190 | 225 | M25X1,5            |
| MVSI 10/1400-S08  | A    | 620(50Hz)<br>574(60Hz)   | 244 | 230 | 140 | 190 | 17    | 4  | 45  | 116   | 194(50Hz)<br>171(60Hz)   | 207 | 190 | 225 | M25X1,5            |
| MVSI 10/1610-S08  | A    | 617(50Hz)<br>537(60Hz)   | 272 | 275 | 155 | 225 | 22    | 4  | 70  | 130   | 177(50Hz)<br>137(60Hz)   | 238 | 210 | 253 | M25X1,5            |
| MVSI 10/2100-S08  | A    | 663(50Hz)<br>617(60Hz)   | 272 | 275 | 155 | 225 | 22    | 4  | 70  | 130   | 200(50Hz)<br>177(60Hz)   | 238 | 210 | 253 | M25X1,5            |
| MVSI 10/2610-S02  | A    | 666                      | 321 | 310 | 155 | 255 | 23,5  | 4  | 77  | 157   | 178                      | 277 | 215 | 295 | M25X1,5            |
| MVSI 10/3000-S02  | A    | 712                      | 321 | 310 | 155 | 255 | 23,5  | 4  | 77  | 157   | 201                      | 277 | 215 | 295 | M25X1,5            |
| MVSI 10/3810-S02  | A    | 734                      | 347 | 340 | 180 | 280 | 26    | 4  | 80  | 165   | 202                      | 303 | 240 | 320 | M32X1,5            |
| MVSI 10/4700-S02  | A    | 796                      | 347 | 340 | 180 | 280 | 26    | 4  | 80  | 165   | 233                      | 303 | 240 | 320 | M32X1,5            |
| MVSI 10/5150-S02  | A    | 826                      | 347 | 340 | 180 | 280 | 26    | 4  | 80  | 165   | 248                      | 303 | 240 | 320 | M32X1,5            |
| MVSI 10/5200-S02  | A    | 744                      | 370 | 390 | 200 | 320 | 28    | 4  | 90  | 180   | 192                      | 330 | 270 | 350 | M32X1,5            |
| MVSI 10/5700-S02  | A    | 840                      | 370 | 390 | 200 | 320 | 28    | 4  | 90  | 180   | 240                      | 330 | 270 | 350 | M32X1,5            |
| MVSI 10/6500-S02  | A    | 840                      | 370 | 390 | 200 | 320 | 28    | 4  | 90  | 180   | 240                      | 330 | 270 | 350 | M32X1,5            |
| MVSI 10/6600-S02  | C    | 750                      | 437 | 460 | 125 | 380 | 39    | 6  | 35  | 215   | 174                      | 387 | 320 | 414 | M32X1,5            |
| MVSI 10/7000-S02  | A    | 840                      | 370 | 390 | 200 | 320 | 28    | 4  | 90  | 180   | 240                      | 330 | 270 | 350 | M32X1,5            |
| MVSI 10/8000-S90  | A    | 870                      | 395 | 392 | 200 | 320 | 28    | 4  | 100 | 192   | 255                      | 355 | 270 | 375 | M32X1,5            |
| MVSI 10/9000-S90  | A    | 870                      | 395 | 392 | 200 | 320 | 28    | 4  | 100 | 192   | 255                      | 355 | 270 | 375 | M32X1,5            |
| MVSI 10/10000-S02 | C    | 862                      | 437 | 460 | 125 | 380 | 39    | 6  | 35  | 215   | 230                      | 387 | 320 | 414 | M32X1,5            |
| MVSI 10/11200-S02 | C    | 912                      | 437 | 460 | 125 | 380 | 39    | 6  | 35  | 215   | 255                      | 387 | 320 | 414 | M32X1,5            |
| MVSI 10/12000-S90 | C    | 990                      | 454 | 530 | 140 | 440 | 45    | 6  | 38  | 230   | 240                      | 423 | 370 | 448 | M32X1,5            |
| MVSI 10/13000-S02 | C    | 1002                     | 437 | 460 | 125 | 380 | 39    | 6  | 35  | 215   | 300                      | 387 | 320 | 414 | M32X1,5            |
| MVSI 10/15000-S02 | F    | 960                      | 526 | 570 | 140 | 480 | 45    | 8  | 41  | 268   | 200                      | 486 | 510 | 516 | M32X1,5            |
| MVSI 10/17500-S02 | F    | 1040                     | 526 | 570 | 140 | 480 | 45    | 8  | 41  | 268   | 240                      | 486 | 510 | 516 | M32X1,5            |
| MVSI 10/19500-S02 | F    | 1120(50Hz)<br>1040(60Hz) | 526 | 570 | 140 | 480 | 45    | 8  | 41  | 268   | 280(50Hz)<br>240(60Hz)   | 486 | 510 | 516 | M32X1,5            |
| MVSI 10/22000-S90 | F    | 1150                     | 607 | 610 | 140 | 520 | 45    | 8  | 38  | 297   | 298                      | 542 | 510 | 582 | M32X1,5            |
| MVSI 10/25000-S90 | F    | 1150                     | 607 | 610 | 140 | 520 | 45    | 8  | 38  | 297   | 298                      | 542 | 510 | 582 | M32X1,5            |
| MVSI 10/30000-S02 | Q    | 1205                     | 648 | 700 | 140 | 600 | 45    | 8  | 45  | 320   | 310                      | 600 | 510 | 660 | M32X1,5            |

Ia/I<sub>n</sub> = ratio between start-up current and maximum current.

Several sizes are available with different mounting bolt patterns. Please contact sales office at Italvibras.





# MVSI-SI add -SI suffix to part number when ordering Vibrator



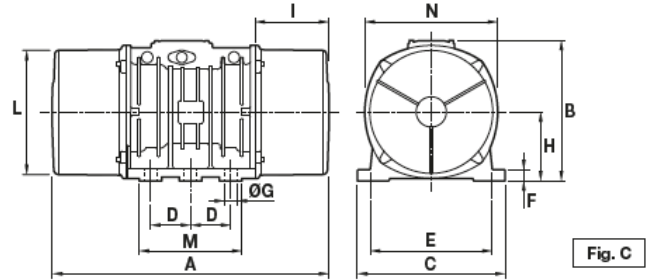
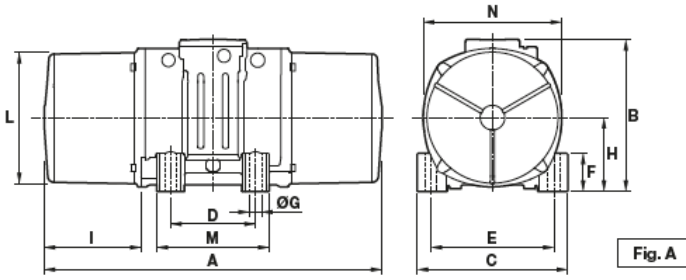
## 8 poles - 750/900 rpm

### Three-phase

| DESCRIPTION |                     |      |         | MECHANICAL SPECIFICATIONS |       |                         |       |      |      |              |      | ELECTRICAL SPECIFICATIONS |       |                   |              |       |      |
|-------------|---------------------|------|---------|---------------------------|-------|-------------------------|-------|------|------|--------------|------|---------------------------|-------|-------------------|--------------|-------|------|
| Code        | Type                | SIZE |         | Static moment*<br>kgmm    |       | Centrifugal force<br>kg |       |      |      | Weight<br>kg |      | Max input power<br>W      |       | Max. current<br>A |              | Ia/In |      |
|             |                     |      |         | 50Hz                      | 60Hz  | 50Hz                    | 60Hz  | 50Hz | 60Hz | 50Hz         | 60Hz | 50Hz                      | 60Hz  | 400V<br>50Hz      | 460V<br>60Hz | 50Hz  | 60Hz |
| 602568      | MVSI 075/150-S02    | 20   | • 130°C | 163                       | 163   | 104                     | 149   | 1,02 | 1,46 | 18,1         | 18,1 | 230                       | 250   | 0,85              | 0,76         | 2,13  | 2,11 |
| 602575      | MVSI 075/250-S02    | 30   | • 130°C | 286                       | 286   | 181                     | 260   | 1,76 | 2,55 | 26,2         | 26,2 | 350                       | 380   | 1,10              | 1,05         | 2,03  | 2,29 |
| 602615      | MVSI 075/400-S02    | 35   | • -     | 457                       | 457   | 288                     | 415   | 2,83 | 4,07 | 32,6         | 32,6 | 375                       | 410   | 0,81              | 0,80         | 2,22  | 2,38 |
| 602616      | MVSI 075/530-S02    | 35   | • -     | 580                       | 580   | 365                     | 528   | 3,60 | 5,20 | 36,0         | 36,0 | 375                       | 410   | 0,81              | 0,80         | 2,22  | 2,38 |
| 602609      | MVSI 075/660-S08    | 40   | • 120°C | 723                       | 723   | 456                     | 656   | 4,47 | 6,44 | 44,0         | 44,0 | 400                       | 450   | 1,20              | 1,20         | 2,38  | 2,58 |
| 602610      | MVSI 075/910-S08    | 50   | • 120°C | 1012                      | 1012  | 637                     | 917   | 6,25 | 9,00 | 55,8         | 55,8 | 400                       | 500   | 1,40              | 1,30         | 2,38  | 2,85 |
| 602618      | MVSI 075/1310-S08   | 60   | • 150°C | 1464                      | 1464  | 922                     | 1327  | 9,04 | 13,0 | 80,0         | 80,0 | 950                       | 1100  | 2,20              | 2,20         | 2,63  | 3,41 |
| 602619      | MVSI 075/1750-S08   | 60   | • 135°C | 1927                      | 1927  | 1214                    | 1747  | 11,9 | 17,1 | 92,0         | 92,0 | 1100                      | 1300  | 2,60              | 2,26         | 2,78  | 3,04 |
| 602891      | MVSI 075/2110-S02   | 70   | • 135°C | 2326                      | 2326  | 1463                    | 2107  | 14,4 | 20,7 | 130          | 130  | 1500                      | 1790  | 4,10              | 4,20         | 3,55  | 2,95 |
| 602884      | MVSI 075/3110-S02   | 80   | • 135°C | 3422                      | 3422  | 2152                    | 3099  | 21,1 | 30,4 | 188          | 188  | 2000                      | 2300  | 5,40              | 5,20         | 3,98  | 4,62 |
| 602515      | MVSI 075/3800-S02   | 80   | • 135°C | 4206                      | 4206  | 2645                    | 3808  | 25,9 | 37,4 | 204          | 204  | 2500                      | 3000  | 6,00              | 6,00         | 4,00  | 4,20 |
| 602862      | MVSI 075/4200-S02   | 90   | • 135°C | 4658                      | 4658  | 2930                    | 4218  | 28,7 | 41,4 | 238          | 238  | 2800                      | 3350  | 6,50              | 6,50         | 3,84  | 4,00 |
| 602826      | MVSI 075/5300-S02   | 90   | • 135°C | 5838                      | 5838  | 3672                    | 5287  | 36,0 | 51,9 | 268          | 268  | 4000                      | 4300  | 8,20              | 7,85         | 3,87  | 5,35 |
| 602827      | MVSI 075/6500-S90   | 95   | □ 135°C | 7197                      | 7197  | 4526                    | 6517  | 44,4 | 63,9 | 315          | 315  | 4900                      | 5800  | 9,90              | 9,50         | 3,04  | 3,26 |
| 602551      | MVSI 075/6800-S02 Δ | 97   | □ 135°C | 7340                      | 7340  | 4616                    | 6647  | 45,3 | 65,2 | 328          | 328  | 5600                      | 6000  | 10,5              | 10,0         | 3,12  | 3,30 |
| 602870      | MVSI 075/10000-S02  | 97   | □ 135°C | 12390                     | 10973 | 7792                    | 9937  | 76,4 | 97,5 | 438          | 419  | 6800                      | 7450  | 13,2              | 12,0         | 3,33  | 3,92 |
| 602863      | MVSI 075/12000-S90  | 100  | □ 135°C | 13816                     | 12407 | 8689                    | 11235 | 85,2 | 110  | 540          | 520  | 7600                      | 8300  | 14,0              | 13,5         | 3,72  | 3,78 |
| 602871      | MVSI 075/14000-S02  | 105  | □ -     | 17946                     | 15500 | 11285                   | 14036 | 111  | 138  | 702          | 680  | 9200                      | 9600  | 21,0              | 19,5         | 4,99  | 5,44 |
| 602872      | MVSI 075/17000-S02  | 105  | □ -     | 21337                     | 19064 | 13418                   | 17263 | 132  | 169  | 755          | 711  | 10400                     | 11140 | 22,0              | 20,0         | 5,50  | 5,90 |
| 602873      | MVSI 075/22000-S90  | 110  | □ -     | 28633                     | 24508 | 18005                   | 22192 | 177  | 218  | 1015         | 981  | 12500                     | 16200 | 26,5              | 28,0         | 5,63  | 4,71 |
| 602535      | MVSI 075/26000-S90  | 110  | □ -     | -                         | 28633 | -                       | 25927 | -    | 254  | -            | 1015 | -                         | 16200 | -                 | 28,0         | -     | 4,71 |
| 602589      | MVSI 075/30000-S02  | 120  | □ -     | 47465                     | 33440 | 29845                   | 30280 | 293  | 297  | 1400         | 1280 | 24400                     | -     | 43,0              | -            | 6,00  | -    |

\* Working moment = 2 x static moment.    Δ For special application.    □ CSA certification on request, with feeding line included.

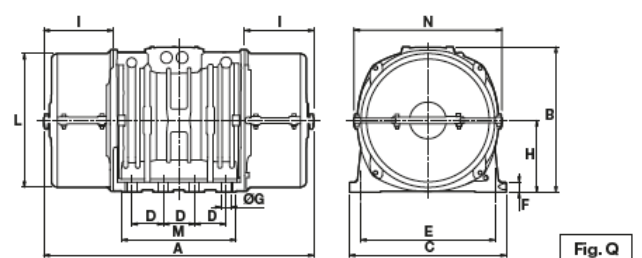
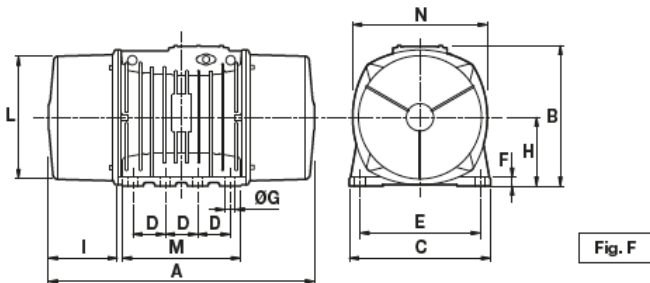
# MVSI-SI add -SI suffix to part number when ordering Vibrator



## DIMENSIONAL SPECIFICATIONS (mm)

| Type                | Fig. | A    | B   | C   | D   | E   | Holes |    | F   | H     | I     | L   | M   | N   | Cable entry thread |
|---------------------|------|------|-----|-----|-----|-----|-------|----|-----|-------|-------|-----|-----|-----|--------------------|
|                     |      |      |     |     |     |     | ØG    | N° |     |       |       |     |     |     |                    |
| MVSI 075/150-S02    | A    | 344  | 203 | 167 | 105 | 140 | 13    | 4  | 30  | 82,5  | 93    | 145 | 146 | 160 | M25X1,5            |
| MVSI 075/250-S02    | A    | 394  | 211 | 205 | 120 | 170 | 17    | 4  | 45  | 93,5  | 106   | 170 | 174 | 182 | M25X1,5            |
| MVSI 075/400-S02    | A    | 435  | 224 | 205 | 120 | 170 | 17    | 4  | 42  | 104,5 | 117,5 | 187 | 162 | 203 | M25X1,5            |
| MVSI 075/530-S02    | A    | 480  | 224 | 205 | 120 | 170 | 17    | 4  | 42  | 104,5 | 140   | 187 | 162 | 203 | M25X1,5            |
| MVSI 075/660-S08    | A    | 500  | 244 | 230 | 140 | 190 | 17    | 4  | 45  | 116   | 134   | 207 | 190 | 225 | M25X1,5            |
| MVSI 075/910-S08    | A    | 574  | 244 | 230 | 140 | 190 | 17    | 4  | 45  | 116   | 171   | 207 | 190 | 225 | M25X1,5            |
| MVSI 075/1310-S08   | A    | 617  | 272 | 275 | 155 | 225 | 22    | 4  | 70  | 130   | 177   | 238 | 210 | 253 | M25X1,5            |
| MVSI 075/1750-S08   | A    | 663  | 272 | 275 | 155 | 225 | 22    | 4  | 70  | 130   | 200   | 238 | 210 | 253 | M25X1,5            |
| MVSI 075/2110-S02   | A    | 666  | 321 | 310 | 155 | 255 | 23,5  | 4  | 77  | 157   | 178   | 277 | 215 | 295 | M25X1,5            |
| MVSI 075/3110-S02   | A    | 734  | 347 | 340 | 180 | 280 | 26    | 4  | 80  | 165   | 202   | 303 | 240 | 320 | M32X1,5            |
| MVSI 075/3800-S02   | A    | 796  | 347 | 340 | 180 | 280 | 26    | 4  | 80  | 165   | 233   | 303 | 240 | 320 | M32X1,5            |
| MVSI 075/4200-S02   | A    | 744  | 370 | 390 | 200 | 320 | 28    | 4  | 90  | 180   | 192   | 330 | 270 | 350 | M32X1,5            |
| MVSI 075/5300-S02   | A    | 840  | 370 | 390 | 200 | 320 | 28    | 4  | 90  | 180   | 240   | 330 | 270 | 350 | M32X1,5            |
| MVSI 075/6500-S90   | A    | 870  | 395 | 392 | 200 | 320 | 28    | 4  | 100 | 192   | 255   | 355 | 270 | 375 | M32X1,5            |
| MVSI 075/6800-S02 Δ | C    | 862  | 437 | 460 | 125 | 380 | 39    | 6  | 35  | 215   | 230   | 387 | 320 | 414 | M32X1,5            |
| MVSI 075/10000-S02  | C    | 1002 | 437 | 460 | 125 | 380 | 39    | 6  | 35  | 215   | 300   | 387 | 320 | 414 | M32X1,5            |
| MVSI 075/12000-S90  | C    | 1070 | 454 | 530 | 140 | 440 | 45    | 6  | 38  | 230   | 280   | 423 | 370 | 448 | M32X1,5            |
| MVSI 075/14000-S02  | F    | 1040 | 526 | 570 | 140 | 480 | 45    | 8  | 41  | 268   | 240   | 486 | 510 | 516 | M32X1,5            |
| MVSI 075/17000-S02  | F    | 1120 | 526 | 570 | 140 | 480 | 45    | 8  | 41  | 268   | 280   | 486 | 510 | 516 | M32X1,5            |
| MVSI 075/22000-S90  | F    | 1150 | 607 | 610 | 140 | 520 | 45    | 8  | 38  | 297   | 298   | 542 | 510 | 582 | M32X1,5            |
| MVSI 075/26000-S90  | F    | 1150 | 607 | 610 | 140 | 520 | 45    | 8  | 38  | 297   | 298   | 542 | 510 | 582 | M32X1,5            |
| MVSI 075/30000-S02  | Q    | 1325 | 649 | 700 | 140 | 600 | 45    | 8  | 45  | 320   | 370   | 600 | 510 | 660 | M32X1,5            |

$I_a/I_n$  = ratio between start-up current and maximum current.  
Several sizes are available with different mounting bolt patterns. Please contact sales office at Italtibras.



■ Germany

**Italvibras Deutschland GmbH**  
Carl-Leverkus-Strasse 20  
40764 Langenfeld  
tel. +49 221 936800  
fax +49 221 9368010  
info@italvibrasdeutschland.com  
www.italvibrasdeutschland.com

■ France

**Italvibras France Sas**  
Zac Garosud - Toucan 34  
256 Rue du Commandant Massoud  
34070 Montpellier - France  
tel. +33 0467 275400  
fax +33 0467 474830  
italvibrasfrance@italvibrasfrance.com  
www.italvibrasfrance.com

■ Spain

**Italvibras Iberica S.L.**  
Pol. Ind. La Nava, calle G, nº12  
31300 Tafalla (Navarra)  
tel.: ++ 34 948 71 23 47  
info@italvibrasiberica.com  
www.italvibrasiberica.com

■ UK

**Vibratechniques Ltd.**  
20 Cecil Pashley Way, Shoreham Airport,  
Shoreham by Sea, Sussex.  
BN43 5FF.  
tel: +44 01273 430977  
fax: +44 01273 430978  
sales@vibtec.com  
www.vibtec.com

■ USA

**Italvibras USA Inc.**  
1940 Vans Way Princeton, IL 61356  
tel. +1 815-872-1350  
fax +1 866-337-2693  
sales@italvibrasusa.com  
www.italvibrasusa.com

**Italvibras USA Inc.**  
2100 Conner Road Suite 200  
Hebron, KY 41048  
tel. +1 859-203-3222  
fax +1 866-337-2693  
sales@italvibrasusa.com  
www.italvibrasusa.com

■ Australia

**Italvibras Australia Pty Ltd.**  
Unit 2, 64 Baile Road  
tel: +61 8 6559 7470  
fax: +61 8 6230 4977  
sales@italvibrasaustralia.com  
www.italvibrasaustralia.com



**Italvibras SpA**  
Via Ghiarola Nuova, 22/26  
I-41042 Fiorano Modenese MO  
Tel. +39 0536 804634  
Fax +39 0536 804720  
italvibras@italvibras.it  
www.italvibras.it



**Vibratechniques Ltd.**  
20 Cecil Pashley Way, Shoreham Airport,  
Shoreham by Sea, Sussex.  
BN43 5FF.  
tel: +44 01273 430977  
fax: +44 01273 430978  
sales@vibtec.com  
www.vibtec.com