

The VB series is made up of vertical vibrators which feature a double conical flange. These vibrators are typically used in circular screens and in medium-size and large sieves.

They are supplied without eccentric weights, which must be realised and mounted by the manufacturer of the vibrating machine.

The VB series complies with the most recent IEC and EN international standards for use in atmospheres with potentially explosive dust particles. In particular, the VB series can be used in areas 21 and 22.

Technical features

Power supply

Three-phase voltage from 220V to 690V, 50Hz or 60Hz; suitable for use with an inverter from 20Hz to the base frequency with constant torque load profile

Polarity

4 and 6 poles.

Conformity with Standards and Regulations

Low Voltage Directive 2006/95/EC; ATEX Directive 2014/34/UE; EN/IEC 60034-1, EN/IEC 60079-0, EN/IEC 60079-31, UL 1004-1, CSA C22.2 No.100, NEMA MG-1.

Functioning

Continual service (S1) at maximum declared centrifugal force and electric power. Intermittent services are also possible depending on the type of vibrator and the operating conditions. For detailed information, contact our technical assistance office.

Centrifugal force

Proportioned for a centrifugal force equal to 5000 kgf. (49 kN), with eccentric weights not included, to be made by the user.

Mechanical protection

IP 66 according to IEC/EN 60529.

Protection against mechanical impacts

IK 08 according to IEC/EN 62262.

Insulation class

Class F (155°C), class H (180°C) on request.

Tropicalization

Standard on all vibrators with "drop by drop" trickle system.

Ambient temperature

From -20°C to +40°C. Versions for higher or lower temperatures are available on request.

Vibrator thermal protection

Standard PTC rated thermistor heat detectors 130°C for VB 15/5000-LM, on request for smaller sizes. Also on request thermistors with different temperatures, bimetallic thermal protections and anti-condensation heaters.

Fixing of the vibrator

Typical vertical assembly with double tapered flange.

Lubrication

All vibrators are lubricated in the factory and do not require further lubrication at start-up.

Terminal box

The size guarantees passage of tools used for fixing the vibrator to the vibrating machine. The electrical connection must be carried out using the relative connectors inserted inside the connection box. Special shaped terminals allow to fix the power supply cable, protecting it from loosening.

4 poles - 1.500/1.800 rpm Three-phase

DESCRIPTION				MECHANICAL SPECIFICATIONS								ELECTRICAL SPECIFICATIONS						
Code	Type	Ex	II2D Temp. class	rpm				Centrifugal force				Weight kg	Max input power		Max current		Ia/In	
				50Hz	60Hz	50Hz	60Hz	50Hz	60Hz	50Hz	60Hz		W	W	A	A	50Hz	60Hz
601650	VB 15/2200-D	-	-	1500	1800	2200	2200	21,6	21,6	66,0	1540	1900	2,60	3,00	3,84	4,00		
601223	VB 15/2510-D	•	150°C	1500	1800	2500	2500	24,5	24,5	68,0	2016	2600	3,60	4,10	3,50	3,58		
601651	VB 15/3000-D	-	-	1500	1800	3000	3000	29,5	29,5	78,0	2800	3000	5,90	6,00	6,78	7,00		
601378	VB 15/5000-LM	-	135°C	1500	1800	5000	5000	49,0	49,0	101	3600	3400	6,00	5,00	7,02	8,00		

Certifications

Category: II 2 D

Level of protection:

Ex tD A21 T...°C IP66 (Ex tb IIIC T...°C Db)

Temperature class:

see tables

Zones of use:

21, 22



Compliance with the applicable European Union directives.



Ex tD A21 T...°C IP66 (Ex tb IIIC T...°C Db)
IEC 60079-0
IEC 60079-31



Standard CAN/CSA – C22.2, N°.100-95,
Certificate n° LR 100948
Class 4211 01 - Motors and generators
UL 1004-1 – Rotating Electrical Machines –
General Requirements



Version VB-C available on request
Class I Div.2, Groups ABCD
Standard CAN/CSA – C22.2



Certification for Eurasian Customs Union
N° TC N RU Д-IT.АЛ33.В.02527
N° TC RU C-IT.ГБ08.В.02190



KOSHA Korea
Certificate n° 11-AVG BO-0359
Ex td A21 IP66

Electric motor

Three-phase asynchronous type. Designed for maximum starting torques and torque curves specific to requirements of vibrating machines. Insulated windings using “drop by drop” trickle system with class H resin. The rotor is die cast aluminium.

Casing

In spheroidal cast iron to have high strength and optimal elasticity.

Bearing flange

The two flanges, made in spheroidal cast iron, are characterized by external tapered diameter for fixing in the vibrating machine.

Bearings

Custom made with particular geometry, especially designed for Italtvibras, suitable to support both high radial and axial loads.

Motor shaft

In treated steel alloy (Isothermic hardening) resistant to stress. On request both shaft ends may be modified to be adapted to the user weights.

Eccentric weights

Not envisioned, to be made and mounted by the user.

Weight covers

Not envisioned.

Painting

Electrostatic surface treatment based on polymerised epoxy polyester powder in oven at 200°C. Tested in salt spray for 500 hours.

For further details please contact sales

offices at Italtvibras.

The technical data and models listed in this catalogue are not binding. Italtvibras reserves the right to modify them without prior notice.

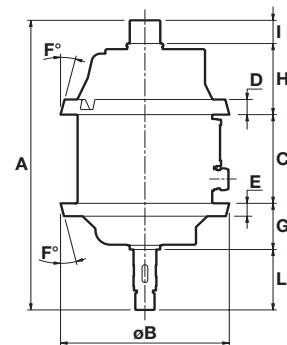


Fig. H

DIMENSIONAL SPECIFICATIONS (mm)

Type	Fig.	A	ØB	C	D	E	F°	G	H	I	L	Cable entry thread
VB 15/2200-D	H	517,5	281	158,5	27	23	14	82,5	127	41,5	108	M32x1,5
VB 15/2510-D	H	517,5	281	158,5	27	23	14	82,5	127	41,5	108	M32x1,5
VB 15/3000-D	H	523	282,5	152	25	25	14	113	129,5	38,0	90,5	M25x1,5
VB 15/5000-LM	H	555	342	208	48	48	25	110	119	48,0	70	M25x1,5

la/In = ratio between start-up current and maximum current.